

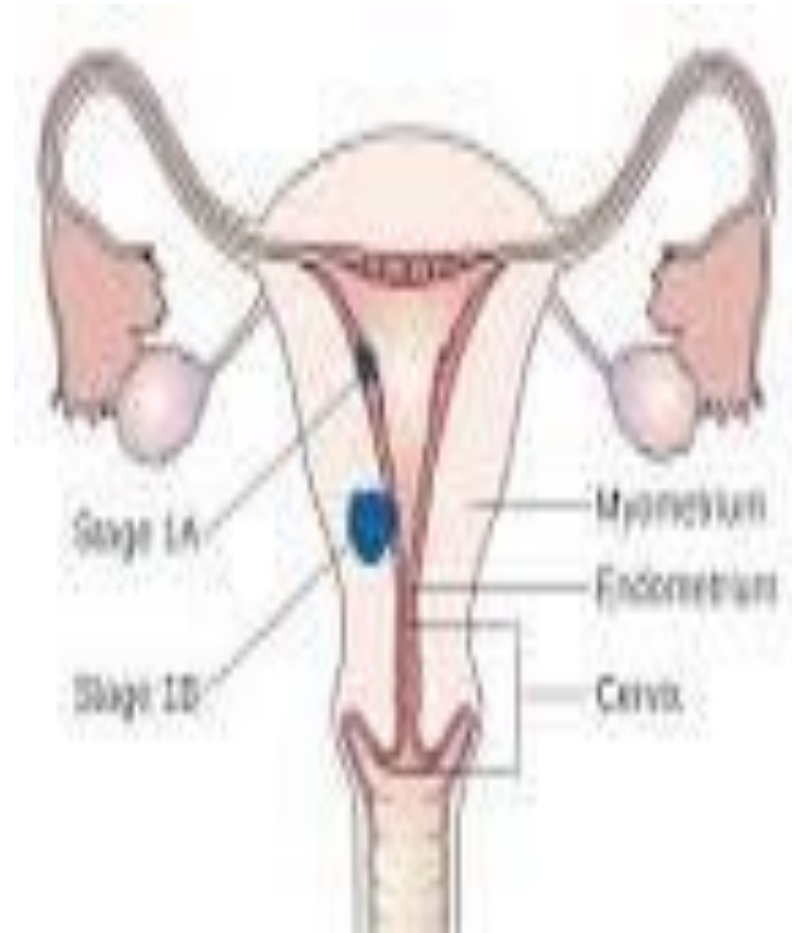


Recidive e tossicità dopo BRT-HDR del fondo vaginale

V. Lancellotta, E. Perrucci, V. Bini, C. Aristei
S.C. Radioterapia Oncologica
Università di Perugia

EPIDEMIOLOGIA

- Tumore ginecologico piu' frequente
- IV tumore per incidenza
- 70-80% confinato utero
- 80% adenocarcinoma endometroide



Amant F, Mansoor RM, Creutzberg CL.
Cancer of the corpus uteri. Int J Gynecol Obstet
119S2: s110-S117, 2012



TERAPIA stadio I-II

● Chirurgia → standard

● grado di differenziazione

● infiltrazione n

● Stato linfoc

● Interessam

● LVI

● istologia



Gruppi di rischio

icale

RADIOTERAPIA

- RTE↓ rischio recidiva locale



RTE

BRT-HDR

Lukka H, Chambers A, Fyles A, Thephamongkhon K, Fueng-Kee-Fung M, Elit J, Kwon J.
On the behalf of the Cancer Care Ontario Program in Evidence-based Care Gynecology Cancer
Disease Site Group. Adjuvant radiotherapy in women with stage I endometrial cancer: a
systemic review. *Gynecol Oncol*, 102:361-368, 2006



RTE vs BRT

PORTEC 2

Tasso di recidive vaginali e OS simili

Ridotta tossicità gruppo BRT



Nout RA, Smit VT, Putter H, Jürgenliemk-Schulz IM, Jobsen JJ, Lutgens LC, et al. Vaginal brachytherapy versus pelvic external beam radiotherapy for patients with endometrial cancer of high-intermediate risk (PORTEC-2): an open-label, non-inferiority, randomised trial. *Lancet* 375:816-823, 2010

CASISTICA ISTITUZIONALE

- Marzo 2003-Dicembre 2012
- 157 pazienti
- Età mediana 64 aa (range 39-84)
- Stadiazione con TC (131 pz) o RM (26 pz)



INDICAZIONI ALLA BRT

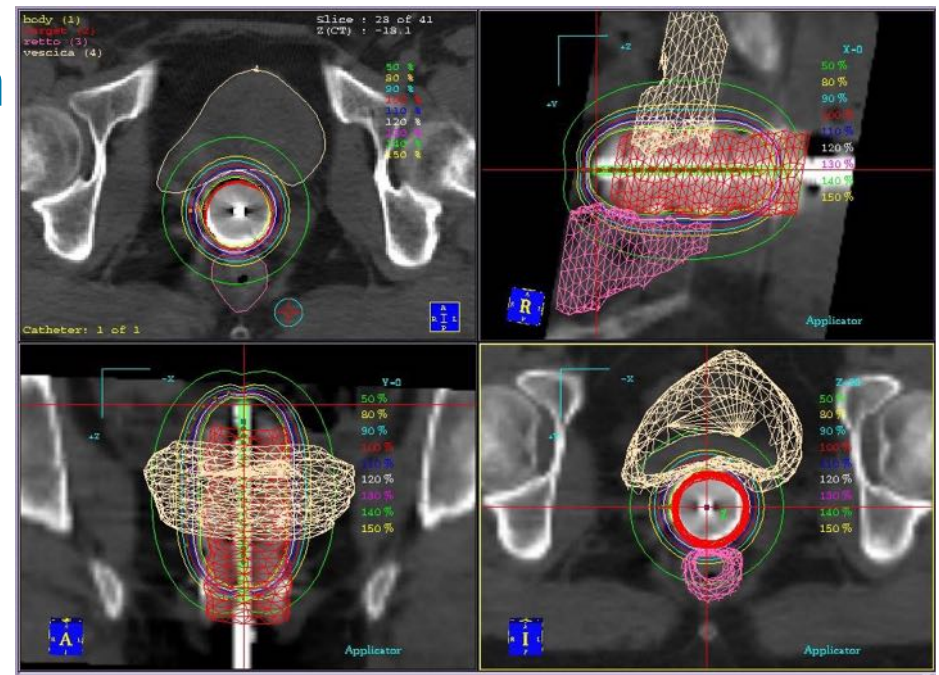
- <50% infiltrazione miometrio, G3
 - >50% infiltrazione miometrio, G1-G2
 - Età >60 anni
 - Adeguata stadiazione chirurgica
- 
- 

Caratteristiche delle pazienti e del tumore

• Età mediana (anni)	64 (range 39-84)	
	N°	(%)
• Grado 1	49	(31)
• Grado 2	98	(62)
• Grado 3	10	(7)
• Stadio IA	89	(57)
• Stadio IB	61	(39)
• Stadio II	7	(4)
• TAHBSO	71	(45)
• TAHBSO + LND	86	(55)
• Numero mediano di linfonodi escissi	9 (range 1-36)	



BRT-HDR

- BRT-HDR con ^{192}Ir
- CTV: apice vagina+metà prossimale vagina
- Target+OAR contornati su TC
- 21 Gy/3 fr/settimana
- Dose prescritta a 5 mm dalla superficie dell'applicatore





FOLLOW-UP

- **EO**: ogni 4 mesi per i primi 2 aa, ogni 6 mesi per i successivi 3 aa e poi annualmente
 - **Citologia vaginale**: ogni 6 mesi per i primi 2 aa e poi annualmente
 - **Ecografia addome completo**: ogni 6 mesi per i primi 2 aa e poi annualmente
 - **TC o RM** se richiesti
- 
- 

RISULTATI 10 RECIDIVE

TEMPO MEDIANO 23 MESI (range 11-58 mesi)

Sede	Età	Grado	Stadio	Ln escissi
Vagina	59	I	IB	<12
Centrale	46	2	II	<12
	75	2	IB	<12
Centrale+distanza	56	2	II	>12
LN	70	2	IB	>12
	76	2	IB	>12
	63	3	IB	>12
	66	2	IB	>12
LN+distanza	84	2	II	<12
Met a distanza	67	2	IB	>12

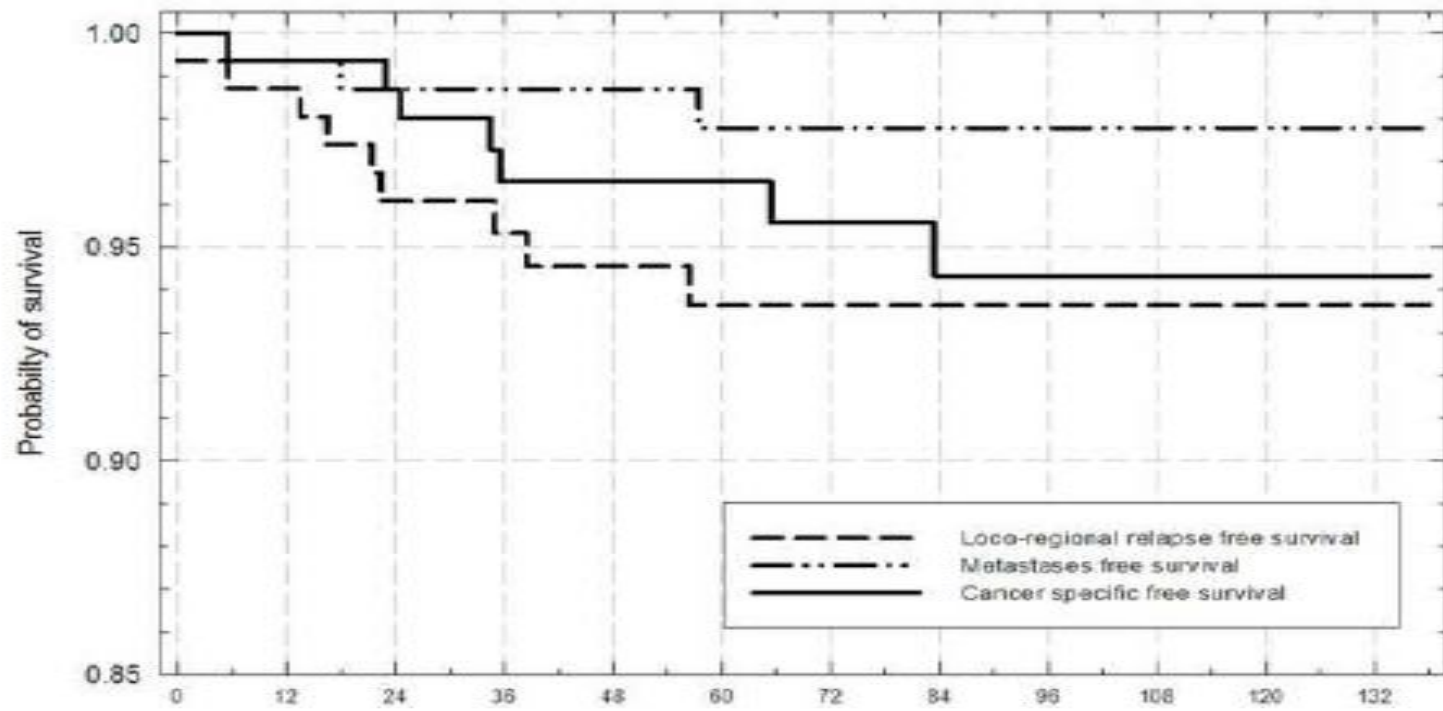
RISULTATI

FU mediano 83 mesi (range 38-213)

- 144 pz vive senza malattia
- 2 pz vive con malattia
- 7 morte per malattia
- 4 morte per altre cause



RISULTATI



LRR
93.6%
 (95%CI:88.1-96.7)

DMF
97.8%
 (95%CI:93.2-99.3)

CSS
96.5%
 (95%CI:90.3-98)

	Number at risk											
	Time in months											
	0	12	24	36	48	60	72	84	96	108	120	132
Loco-regional relapse	157	152	146	127	113	101	90	74	54	30	14	5
Metastasis	157	153	150	128	117	105	90	74	54	30	14	5
Cancer	157	153	146	128	117	105	90	74	54	30	14	5



UNIVARIATA LRR

	B	SE	Wald	df	Sig.	Exp(B)	95.0% CI for Exp(B)	
							Lower	Upper
T	1,292	,507	6,496	1	0,011	3,638	1,348	9,822

Variables in the Equation

	B	SE	Wald	df	Sig.	Exp(B)	95.0% CI for Exp(B)	
							Lower	Upper
G	,945	,615	2,365	1	,124	2,574	,771	8,589

Variables in the Equation

	B	SE	Wald	df	Sig.	Exp(B)	95.0% CI for Exp(B)	
							Lower	Upper
Eta	,036	,037	,906	1	,341	1,036	,963	1,115

Variables in the Equation

	B	SE	Wald	df	Sig.	Exp(B)	95.0% CI for Exp(B)	
							Lower	Upper
Lnasportati	1,954	,731	7,146	1	0,008	7,057	1,684	29,571

UNIVARIATA METASTASI

	B	SE	Wald	df	Sig.	Exp(B)	95.0% CI for Exp(B)	
							Lower	Upper
T	3,122	1,148	7,396	1	0,007	22,699	2,392	215,414

	B	SE	Wald	df	Sig.	Exp(B)	95.0% CI for Exp(B)	
							Lower	Upper
G	,937	1,061	,781	1	,377	2,553	,319	20,414

Variables in the Equation

	B	SE	Wald	df	Sig.	Exp(B)	95.0% CI for Exp(B)	
							Lower	Upper
Età	,072	,069	1,108	1	,293	1,075	,940	1,229

Variables in the Equation

	B	SE	Wald	df	Sig.	Exp(B)	95.0% CI for Exp(B)	
							Lower	Upper
Lnasportati	2,112	1,225	2,971	1	,085	8,262	,749	91,197

UNIVARIATA OS

Variables in the Equation

	B	SE	Wald	df	Sig.	Exp(B)	95.0% CI for Exp(B)	
							Lower	Upper
T	1,397	,605	5,328		0,021	4,043	1,235	13,237

Variables in the Equation

	B	SE	Wald	df	Sig.	Exp(B)	95.0% CI for Exp(B)	
							Lower	Upper
G	,953	,673	2,008	1	,157	2,595	,694	9,701

Variables in the Equation

	B	SE	Wald	df	Sig.	Exp(B)	95.0% CI for Exp(B)	
							Lower	Upper
Età	,055	,045	1,535	1	,215	1,057	,968	1,154

Variables in the Equation

	B	SE	Wald	df	Sig.	Exp(B)	95.0% CI for Exp(B)	
							Lower	Upper
Lnasportati	1,419	,818	3,014	1	,083	4,135	,833	20,527

MULTIVARIATA LRR

	B	SE	Wald	df	Sig.	Exp(B)	95.0% CI for Exp(B)	
							Lower	Upper
T	1,358	,525	6,693		0,010	3,888	1,390	10,878
G	1,077	,993	1,177	1	,278	2,937	,419	20,560
Età	,034	,044	,589	1	,443	1,035	,949	1,128
Lnasportati	1,939	,753	6,640	1	0,010	6,952	1,591	30,385

MULTIVARIATA MET E OS

Variables in the Equation

	B	SE	Wald	df	Sig.	Exp(B)	95.0% CI for Exp(B)	
							Lower	Upper
T	3,138	1,177	7,110	1	,008	23,057	2,296	231,485
G	1,324	1,242	1,137	1	,286	3,758	,330	42,829
Età	,065	,065	1,006	1	,316	1,068	,939	1,213

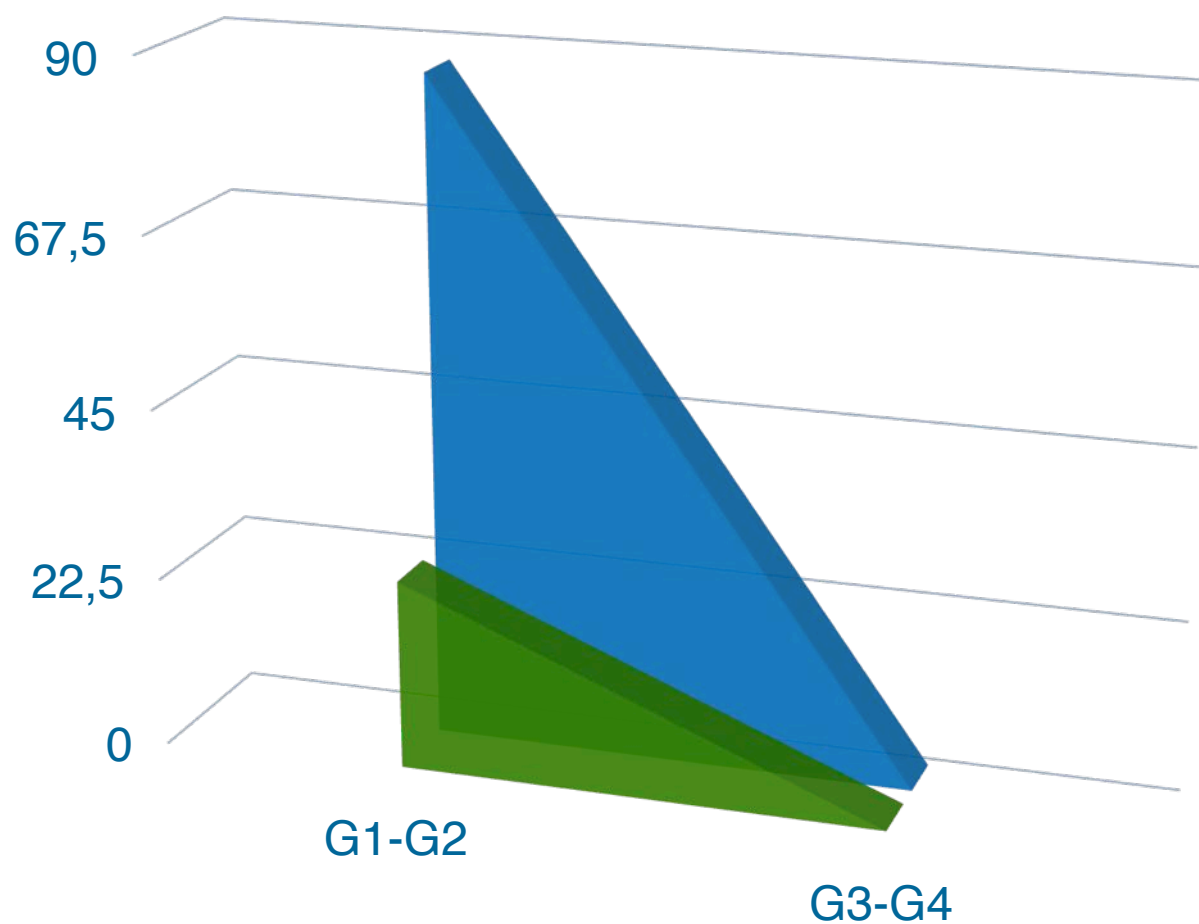
Variables in the Equation

	B	SE	Wald	df	Sig.	Exp(B)	95.0% CI for Exp(B)	
							Lower	Upper
T	1,464	,644	5,164	1	,023	4,324	1,223	15,290
G	1,007	,978	1,059	1	,303	2,737	,402	18,615
Età	,044	,051	,741	1	,389	1,045	,946	1,154
Lnasportati	1,466	,847	2,993	1	,084	4,330	,823	22,779

TOSSICITA'

ACUTA 25 PZ

CRONICA 87 PZ



**NO CORRELAZIONE DIAMETRO
APPLICATORE
TOSSICITA'**



CONCLUSIONI

BRT-HDR in pazienti con carcinoma endometriale stadio I-II, è efficace assicurando un buon controllo locale e bassa tossicità

An aerial photograph of a large, modern hospital complex. The image shows several multi-story buildings, parking lots filled with cars, and a central courtyard area. A prominent text box is overlaid in the center of the image. The text inside the box is in Italian, reading "GRAZIE PER L'ATTENZIONE". The background shows a mix of urban infrastructure and greenery.

GRAZIE PER L'ATTENZIONE