



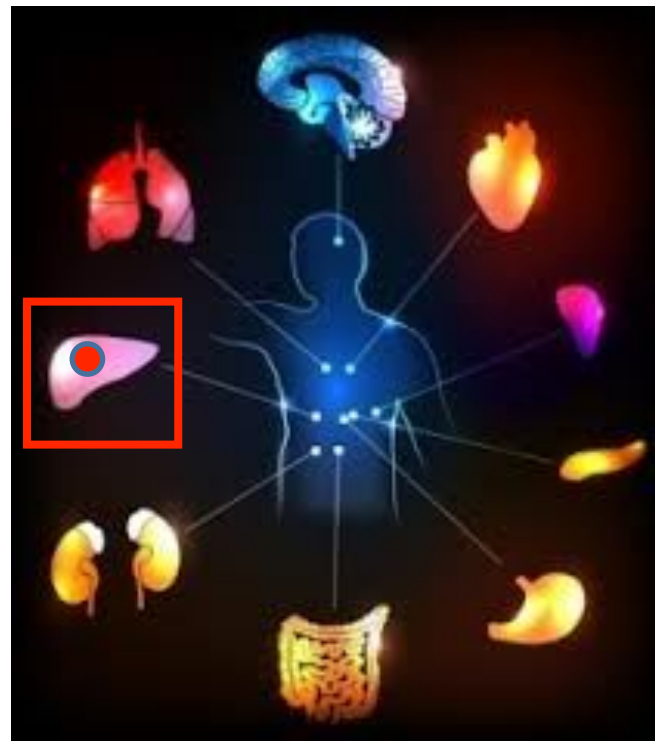
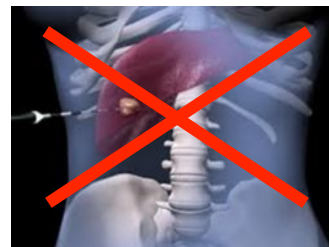
Studio di fase II
sull'utilizzo della
radioterapia
stereotassica in pazienti
con metastasi epatiche
inoperabili da tumore del
colon-retto.

Elena Clerici, Tiziana Comito, Angelo Tozzi, Cristina Iftode, Ciro Franzese, Anna Maria Ascolese, Fiorenza De Rose, Pierina Navarra, Elisa Villa, Sara Pentimalli, Marta Scorsetti

U.O. Radioterapia e Radiochirurgia, Humanitas Clinical and Research Center, Rozzano (Mi)

Background

Which effective, safe and non invasive alternative therapeutic option for **60-80% of oligometastatic patients** unsuitable to locally ablative therapy of liver metastases?



Methods and Materials

Primary end-points: LC and toxicity

Secondary end-points: OS

| | |
|----------------------------------|-----------------|
| No. of Patients | 42 |
| Mean age (range) | 67 (43-87) |
| Gender (M:F) | 36:6 |
| No. of treated lesions: | 52 |
| No. of liver lesions/pts: | |
| 1 | 34 (81%) |
| 2 | 5 (12%) |
| 3 | 3 (7%) |
| Size of lesions | |
| ≤ 3 cm | 28 (55%) |
| > 3 cm | 24 (45%) |
| Total Dose / Frs | 75Gy/3fr |

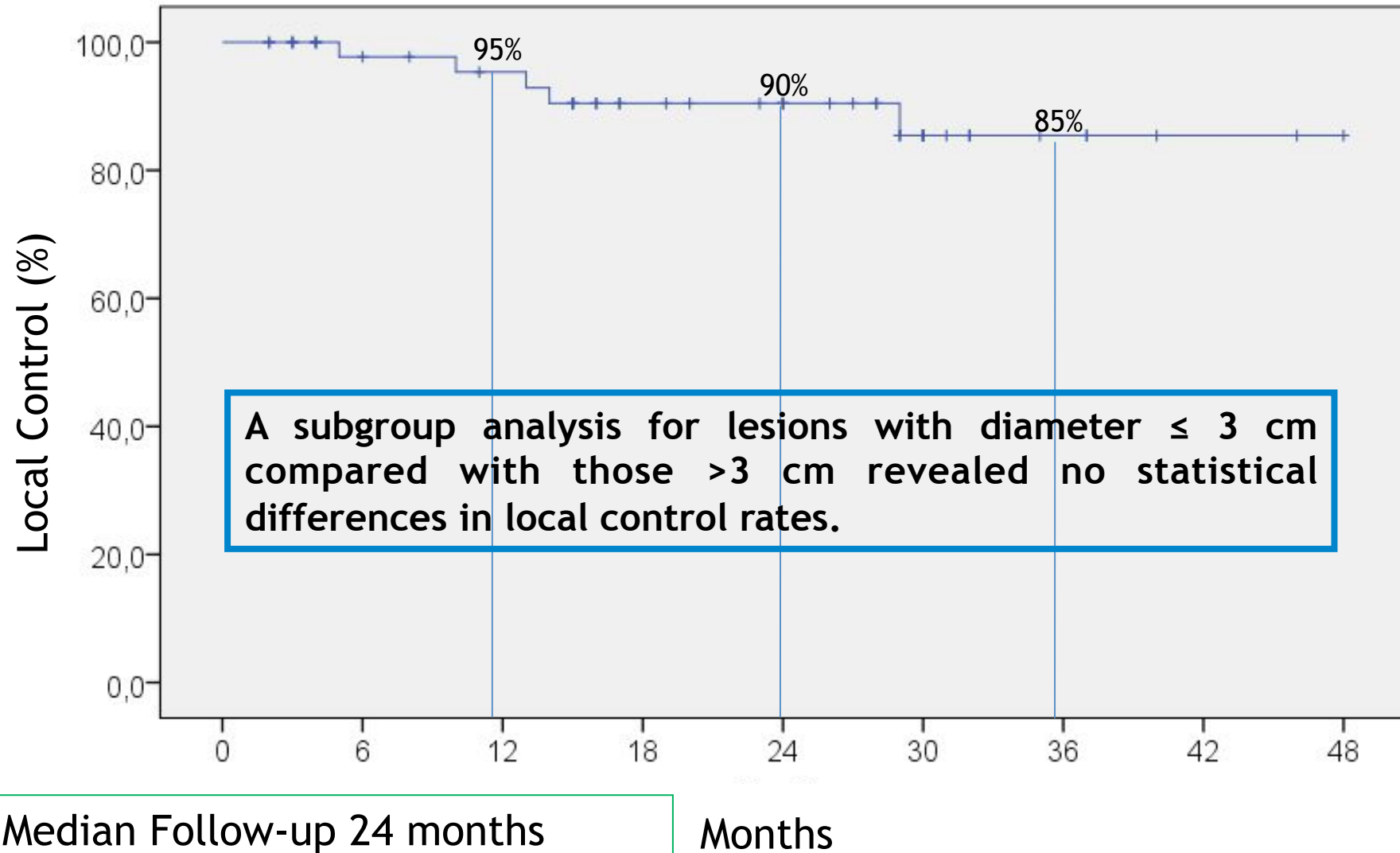
Results



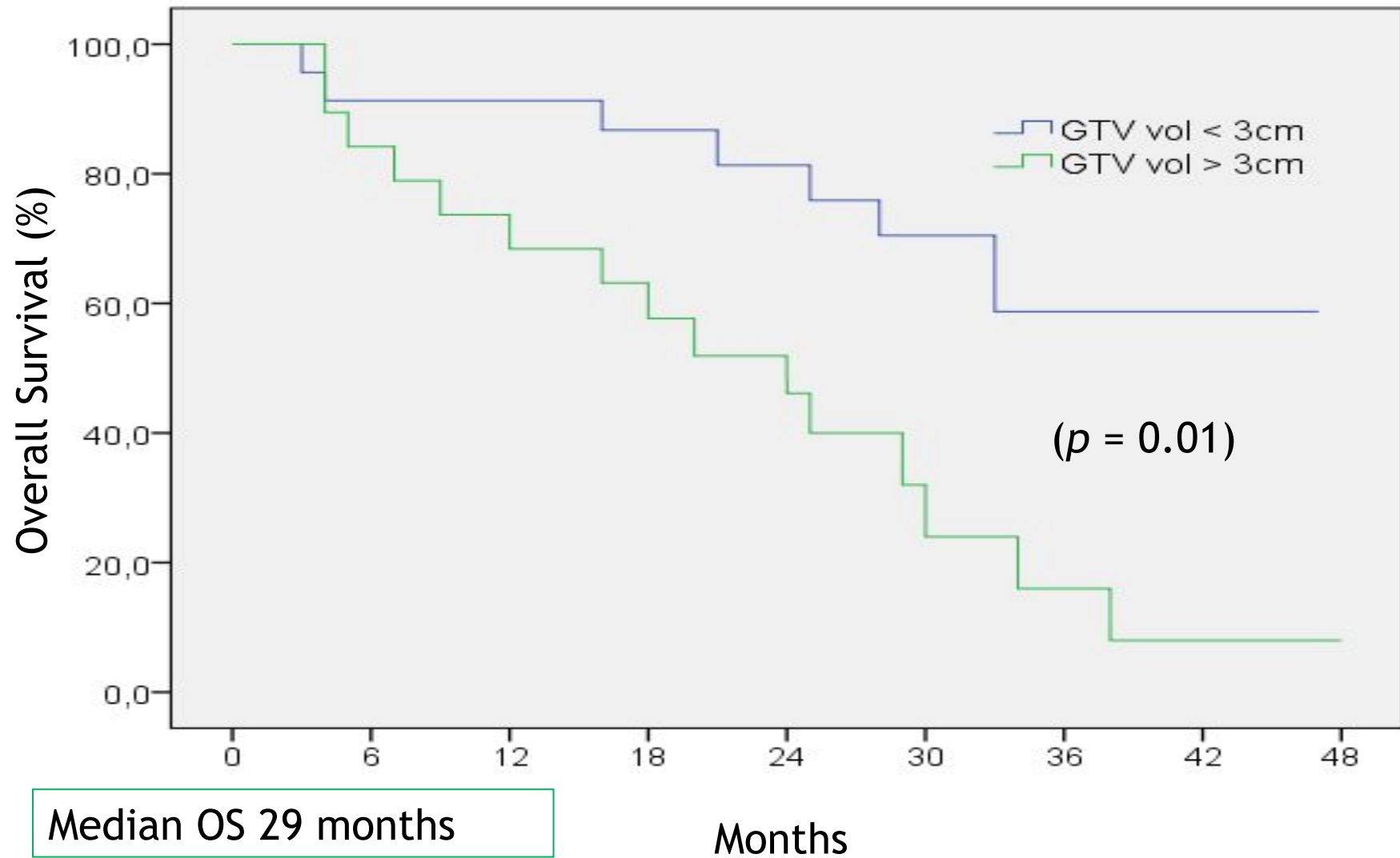
ACUTE TOXICITY (CTCAE v.3.0):

- **G2 fatigue 55%**
- **G2 transient transaminase increase 25%**
- **G2 nausea 12% (S2-S3)**
- **No G3-G4 toxicity observed**

Results



Results



Conclusions

Feasibility: Non invasive and low toxicity

Efficacy: Optimal local control rate

