

# TUMORI DEL DISTRETTO CERVICO-CEFALICO DALLA DEFINIZIONE DEI VOLUMI DI TRATTAMENTO ALL'ADAPTIVE RADIOTHERAPY

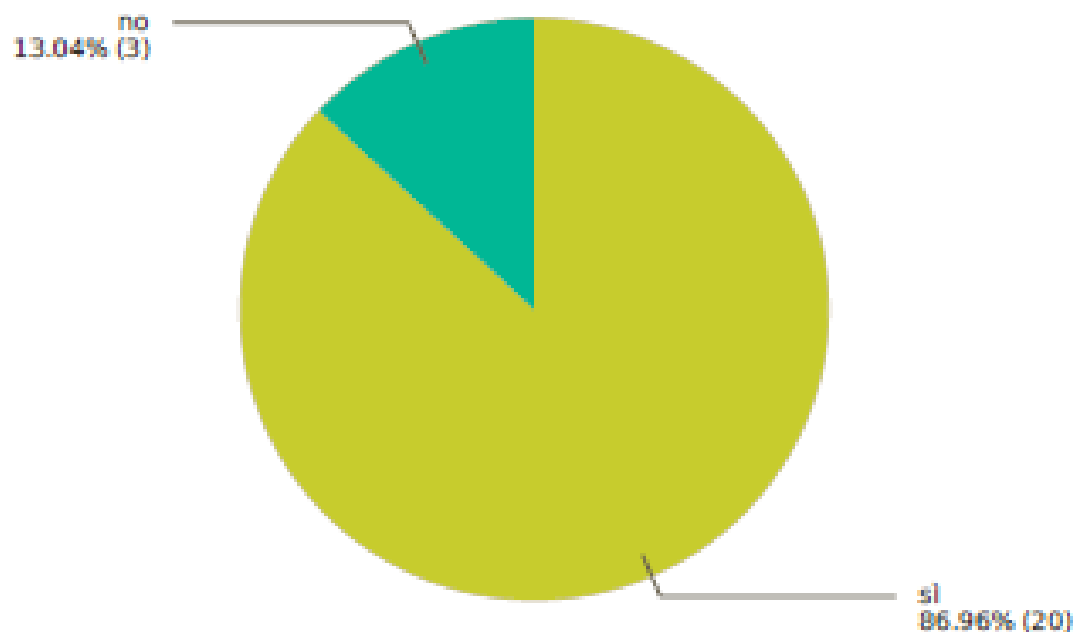
Presentazione survey sui trattamenti  
dei tumori testa-collo in Lombardia

Francesco Romeo Filippone

UO Radioterapia Oncologica  
Azienda Ospedaliera Papa Giovanni XXIII

# Q1 Esiste un board multidisciplinare per il distretto cervico-cefalico presso il tuo istituto?

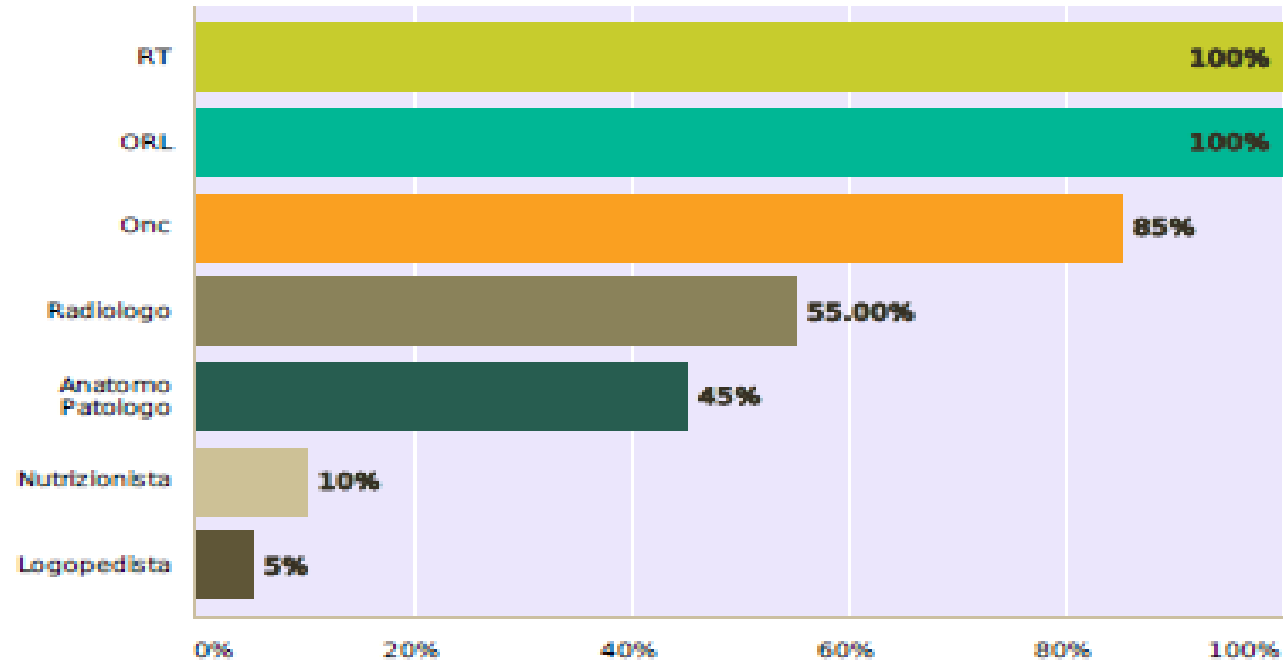
Answered: 23 Skipped: 1



Answer Choices	Responses	
<b>si</b>	<b>86.96%</b>	20
<b>no</b>	<b>13.04%</b>	3
Total		23

## Q2 Quali figure ne fanno regolarmente parte?

Answered: 20 Skipped: 4

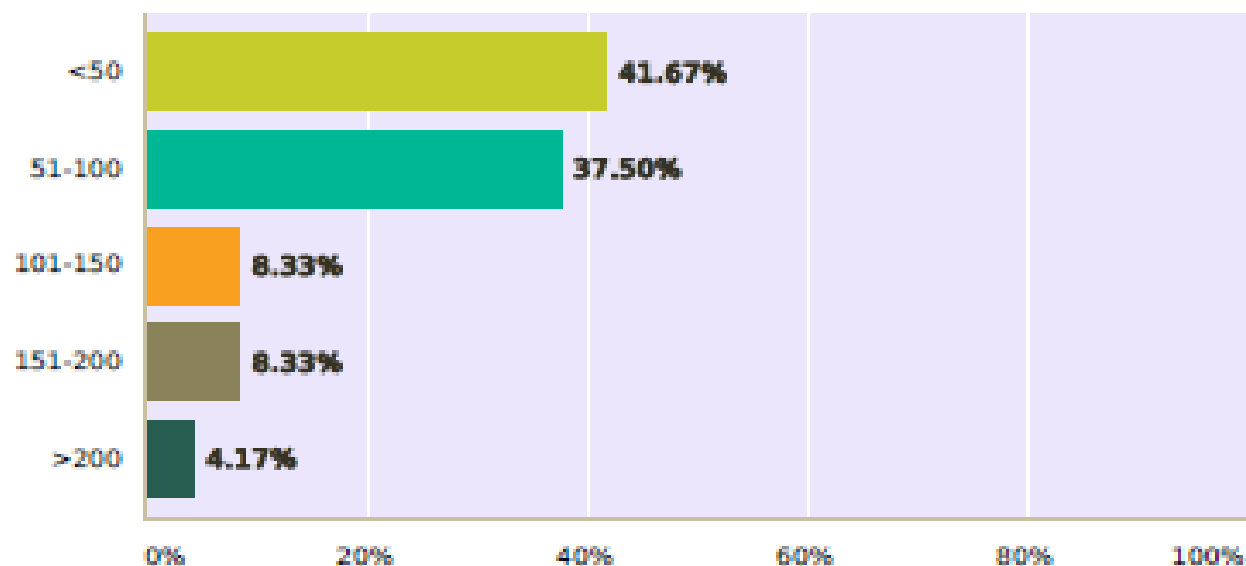


Answer Choices	Responses	Count
<b>RT</b>	<b>100%</b>	20
<b>ORL</b>	<b>100%</b>	20
<b>Onc</b>	<b>85%</b>	17
<b>Radiologo</b>	<b>55.00%</b>	11
<b>Anatomo Patologo</b>	<b>45%</b>	9
<b>Nutrizionista</b>	<b>10%</b>	2
<b>Logopedista</b>	<b>5%</b>	1
Total Respondents: 20		
Altro ( 2 )		



### Q3 Quanti pazienti con tumore del testa-collo sono stati trattati presso il tuo centro nel 2012

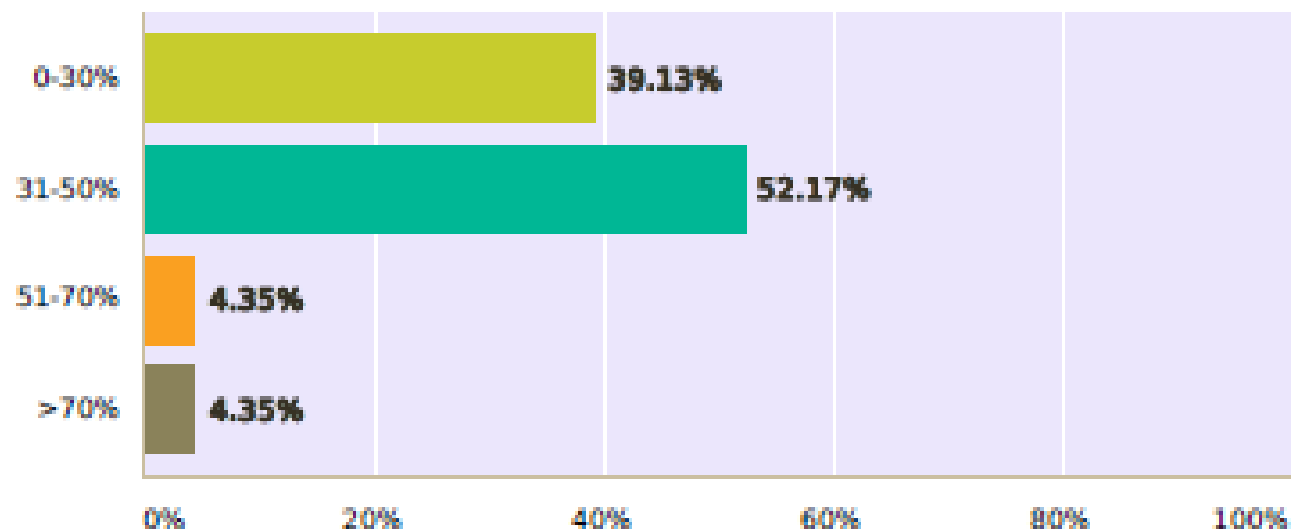
Answered: 24 Skipped: 0



Answer Choices	Responses	
<50	41.67%	10
51-100	37.50%	9
101-150	8.33%	2
151-200	8.33%	2
>200	4.17%	1
Total		24

## Q4 In percentuale quanti trattamenti postoperatori sono stati effettuati?

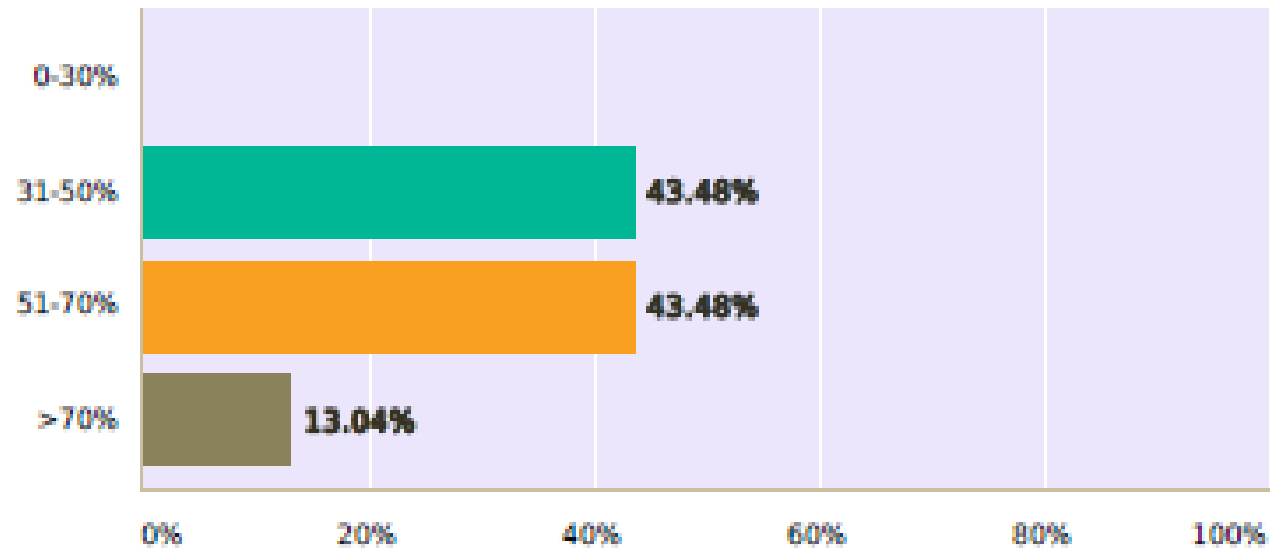
Answered: 23 Skipped: 1



Answer Choices	Responses	
0-30%	39.13%	9
31-50%	52.17%	12
51-70%	4.35%	1
>70%	4.35%	1
Total		23

## Q5 In percentuale quanti trattamenti radicali?

Answered: 23 Skipped: 1

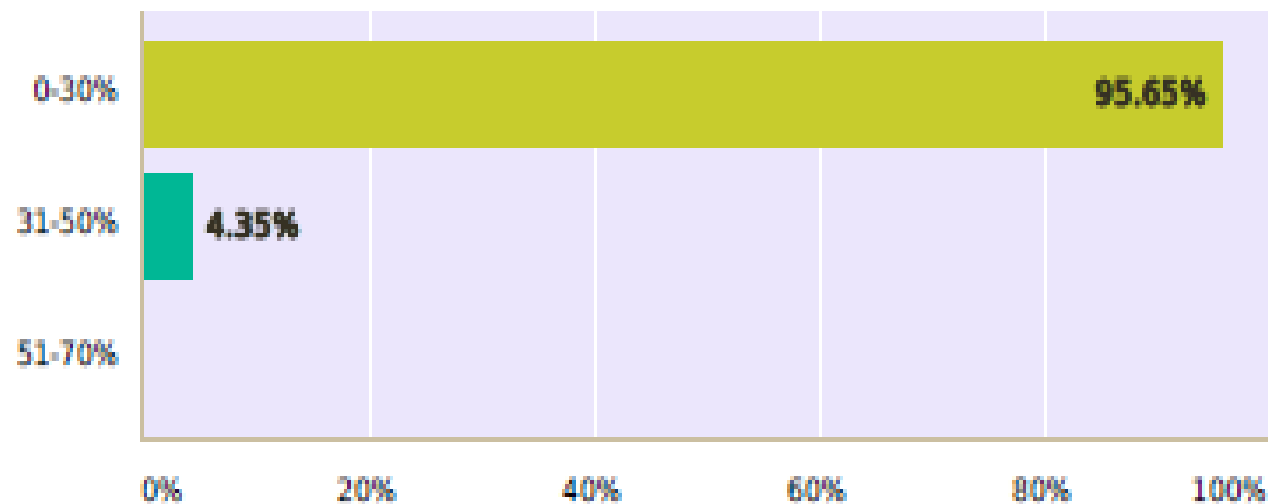


Answer Choices	Responses	
0-30%	0%	0
31-50%	43.48%	10
51-70%	43.48%	10
>70%	13.04%	3
Total		23



## Q6 In percentuale quanti trattamenti palliativi?

Answered: 23 Skipped: 1

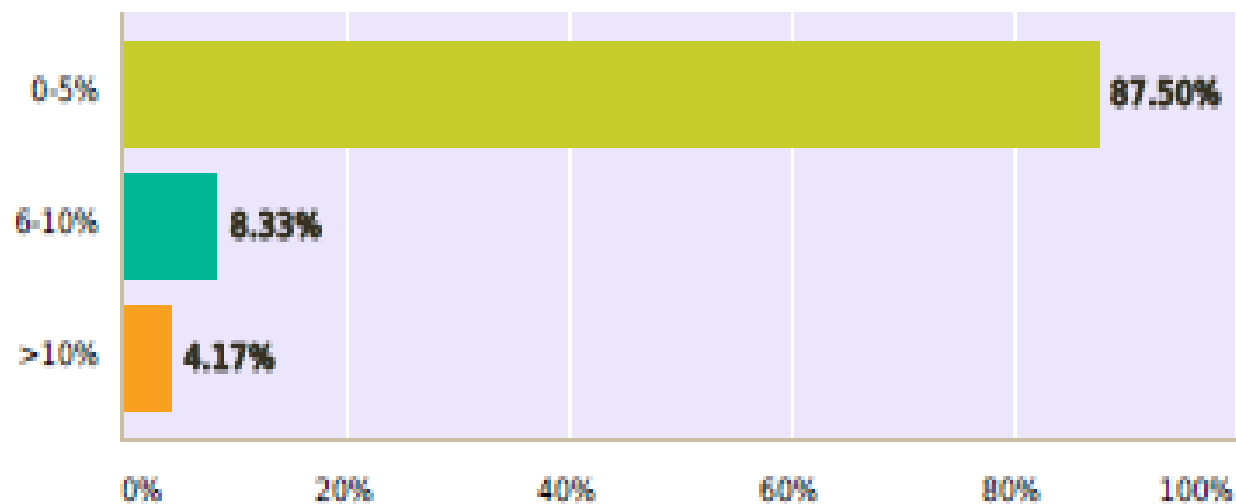


Answer Choices	Responses	
0-30%	95.65%	22
31-50%	4.35%	1
51-70%	0%	0
Total		23



## Q7 In percentuale quante reirradiazioni?

Answered: 24 Skipped: 0



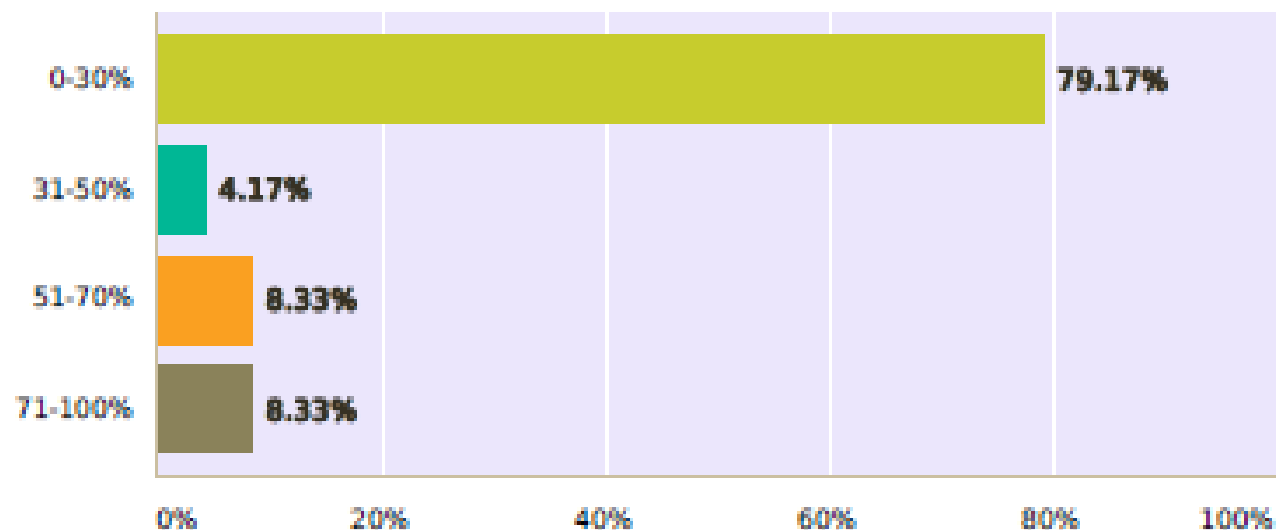
Answer Choices	Responses	Count
0-5%	87.50%	21
6-10%	8.33%	2
>10%	4.17%	1
Total		24





## Q8 In percentuale quanti pazienti sono stati trattati mediante tecnica 3D?

Answered: 24 Skipped: 0

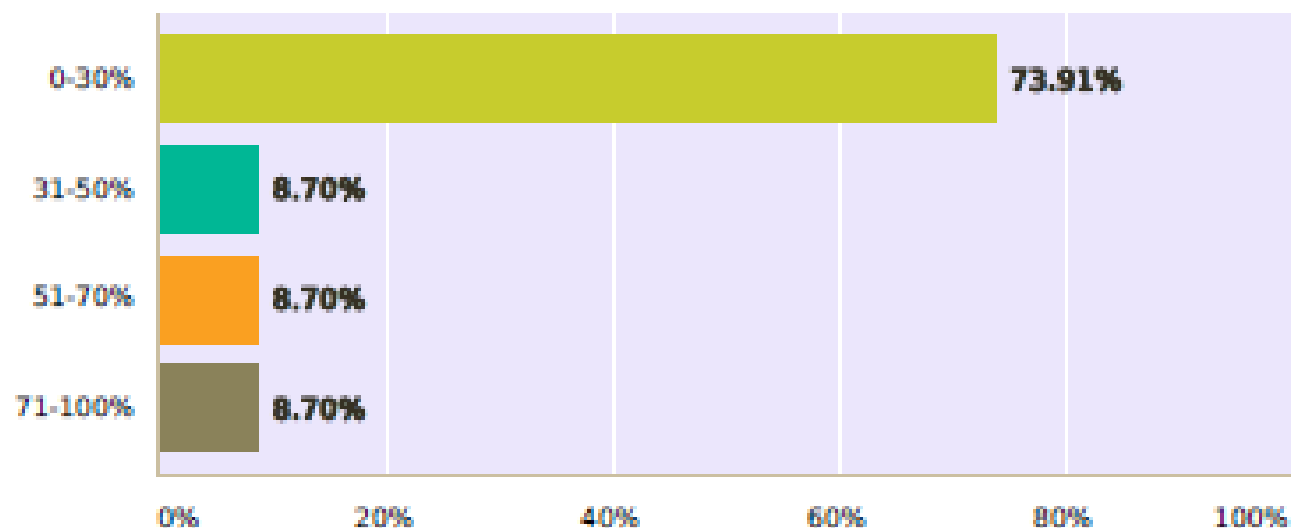


Answer Choices	Responses	
0-30%	79.17%	19
31-50%	4.17%	1
51-70%	8.33%	2
71-100%	8.33%	2
Total		24



## Q9 In percentuale quanti pazienti sono stati trattati mediante tecnica IMRT senza IGRT?

Answered: 23 Skipped: 1

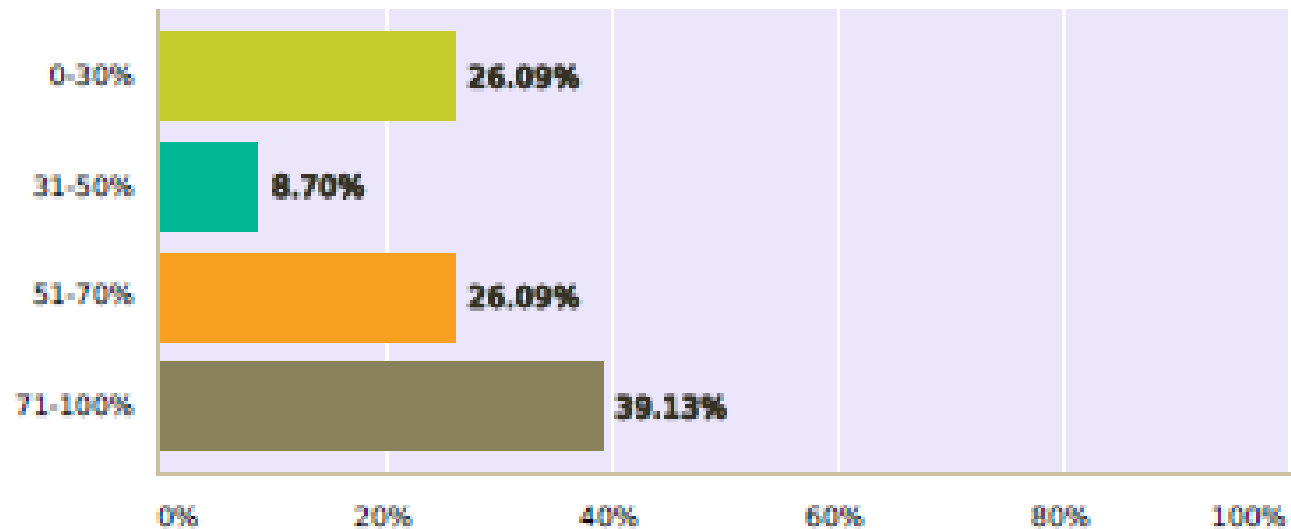


Answer Choices	Responses	
<b>0-30%</b>	<b>73.91%</b>	17
<b>31-50%</b>	<b>8.70%</b>	2
<b>51-70%</b>	<b>8.70%</b>	2
<b>71-100%</b>	<b>8.70%</b>	2
<b>Total</b>		<b>23</b>



## Q10 In percentuale quanti pazienti sono stati trattati mediante tecnica IMRT con IGRT?

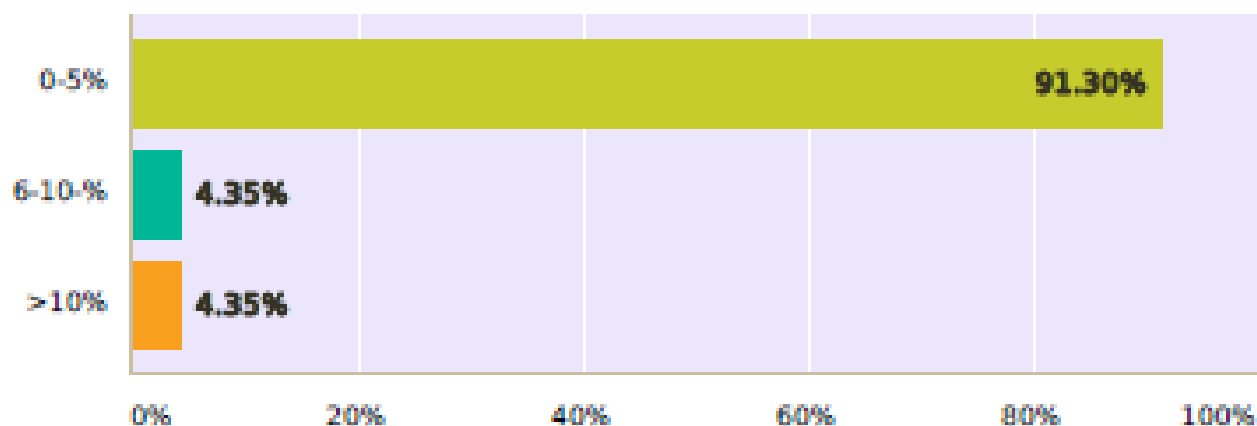
Answered: 23 Skipped: 1



Answer Choices	Responses	
0-30%	26.09%	6
31-50%	8.70%	2
51-70%	26.09%	6
71-100%	39.13%	9
Total		23

**Q11 In percentuale quanti pazienti sono stati trattati mediante tecnica stereotassica, protoni o brachiterapia (in singola modalità o in associazione con RT convenzionale con fotoni)?**

Answered: 23 Skipped: 1

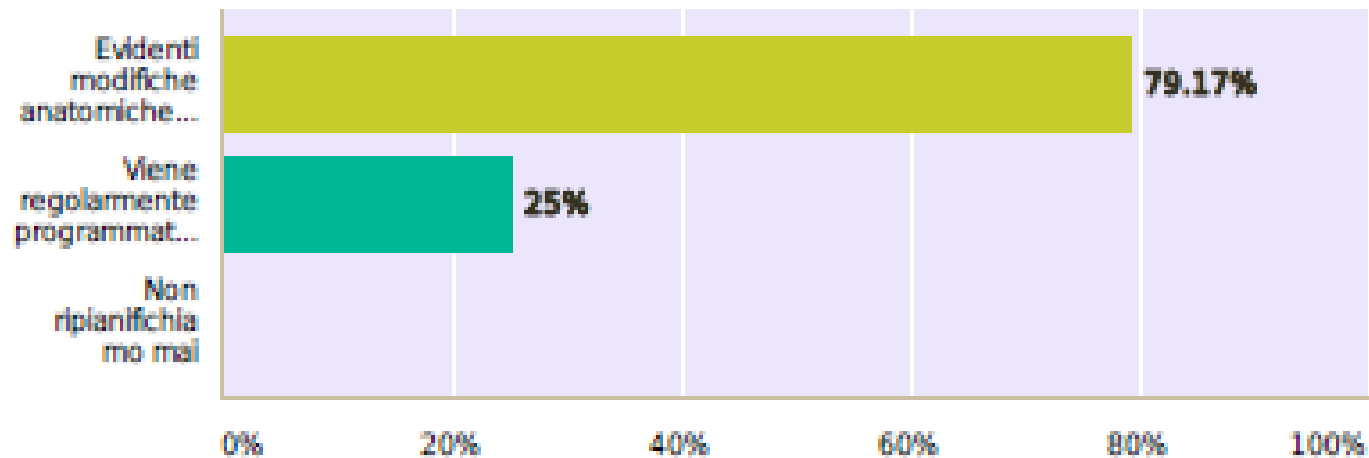


Answer Choices	Responses	
0-5%	91.30%	21
6-10-%	4.35%	1
>10%	4.35%	1
Total		23



## Q12 Il replannig nel tuo Centro viene eseguito per (scegli una delle seguenti opzioni)

Answered: 24 Skipped: 0

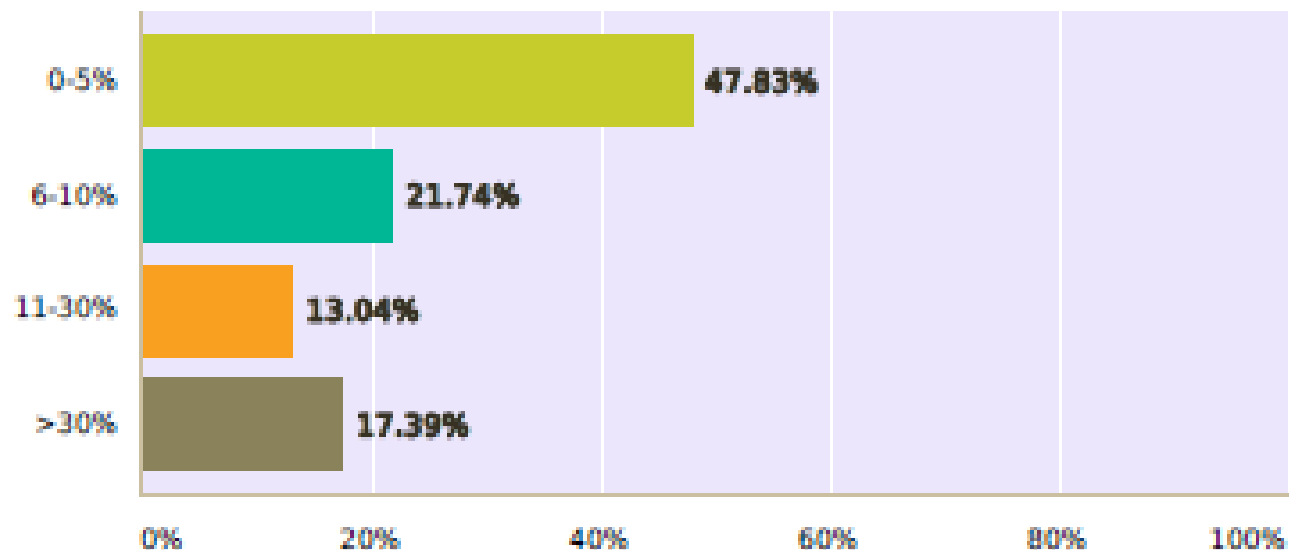


Answer Choices	Responses	
Evidenti modifiche anatomiche del paziente (es. maschera "larga" per calo ponderale)	79.17%	19
Viene regolarmente programmato nel corso del trattamento RT	25%	6
Non ripianifichiamo mai	0%	0
Total Respondents: 24		



## Q13 In percentuale quanti pazienti sono stati sottoposti ad un trattamento adaptive?

Answered: 23 Skipped: 1

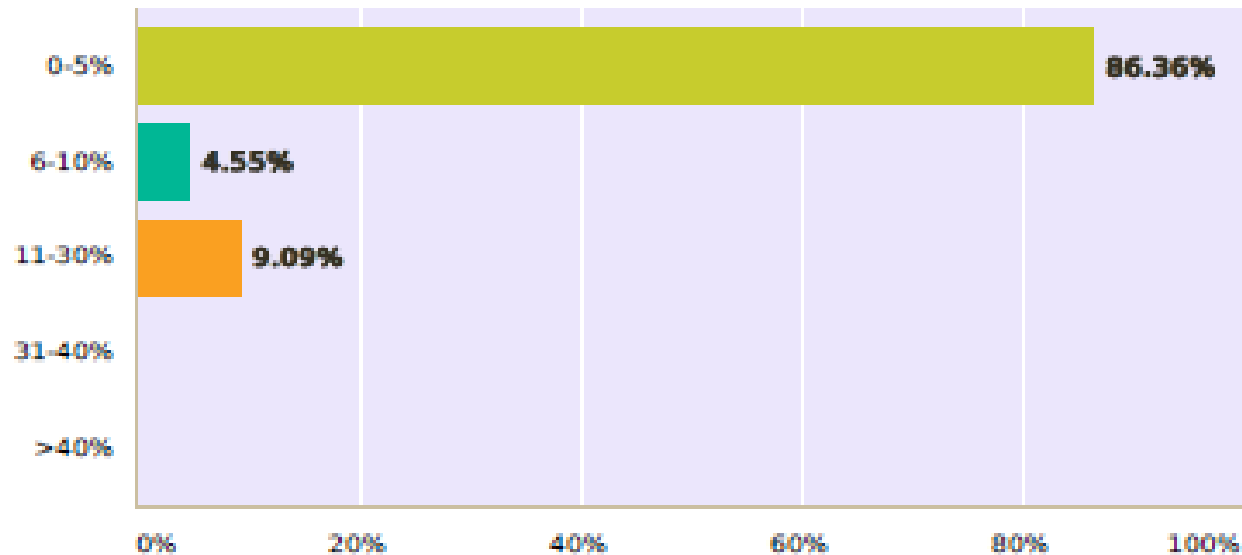


Answer Choices	Responses	
0-5%	47.83%	11
6-10%	21.74%	5
11-30%	13.04%	3
>30%	17.39%	4
Total		23



## Q14 Quanti pazienti in percentuale sono stati sottoposti a chemioterapia d'induzione seguita da sola radioterapia?

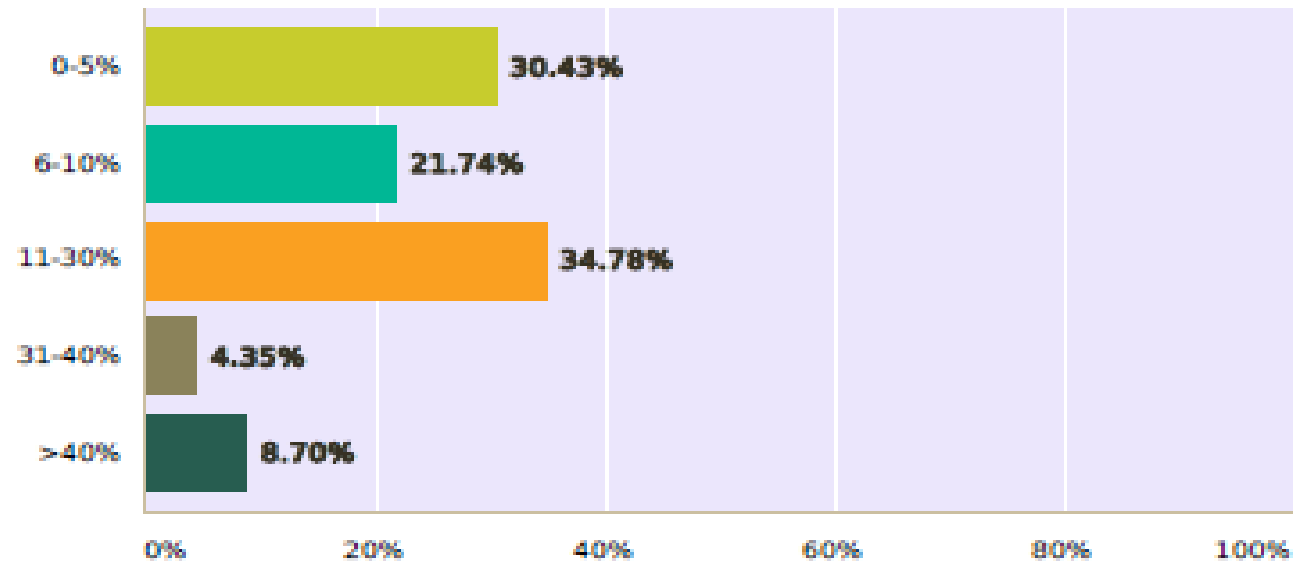
Answered: 22 Skipped: 2



Answer Choices	Responses	
0-5%	86.36%	19
6-10%	4.55%	1
11-30%	9.09%	2
31-40%	0%	0
>40%	0%	0
Total		22

## Q15 Quanti pazienti in percentuale sono stati sottoposti a chemioterapia d'induzione seguita da radio-chemioterapia/anti-EGFR?

Answered: 23 Skipped: 1

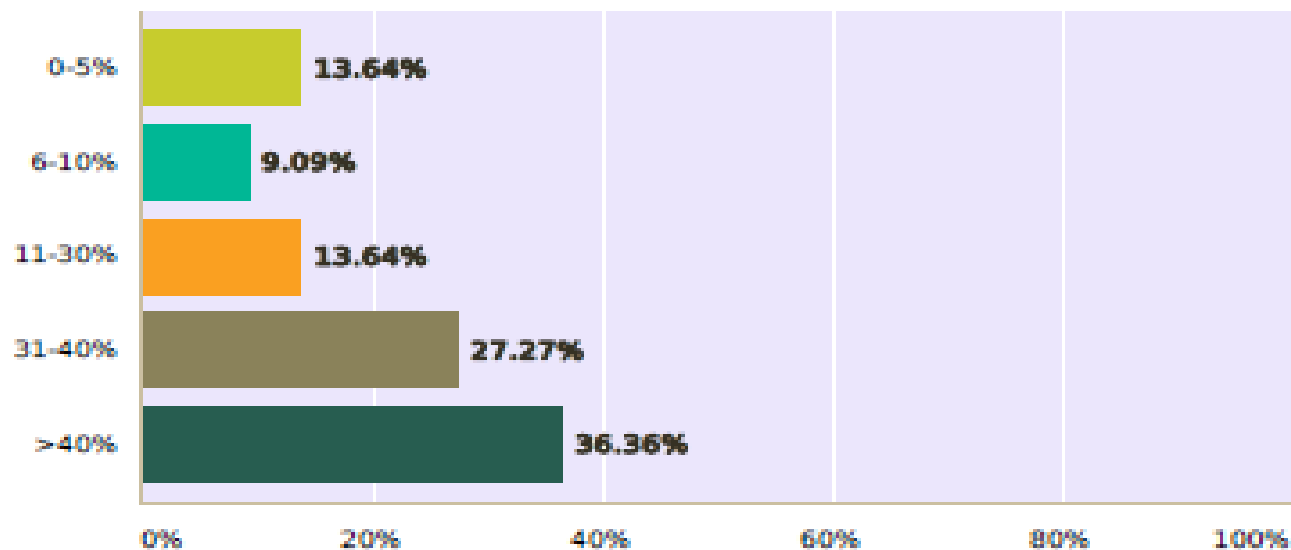


Answer Choices	Responses	
0-5%	30.43%	7
6-10%	21.74%	5
11-30%	34.78%	8
31-40%	4.35%	1
>40%	8.70%	2
Total		23



## Q16 quanti pazienti in percentuale sono stati sottoposti a radio-chemioterapia/anti-EGFR senza cht di induzione?

Answered: 22 Skipped: 2

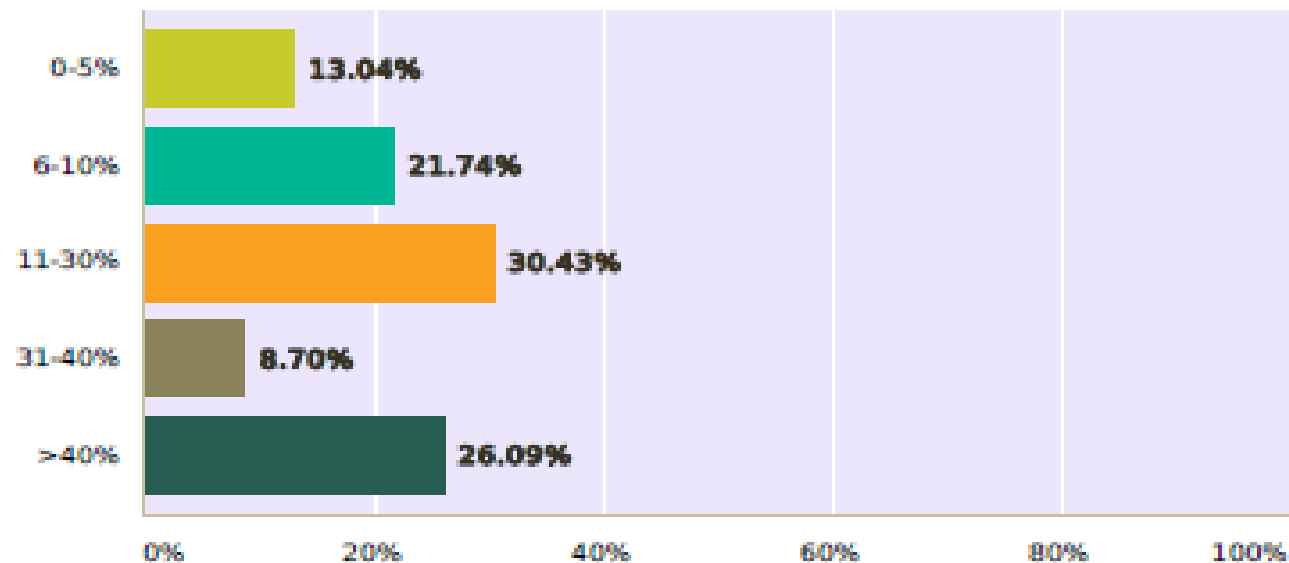


Answer Choices	Responses	
0-5%	13.64%	3
6-10%	9.09%	2
11-30%	13.64%	3
31-40%	27.27%	6
>40%	36.36%	8
Total		22



## Q17 Quanti di questi hanno effettuato un trattamento integrato RT/CHT in ambito postoperatorio?

Answered: 23 Skipped: 1

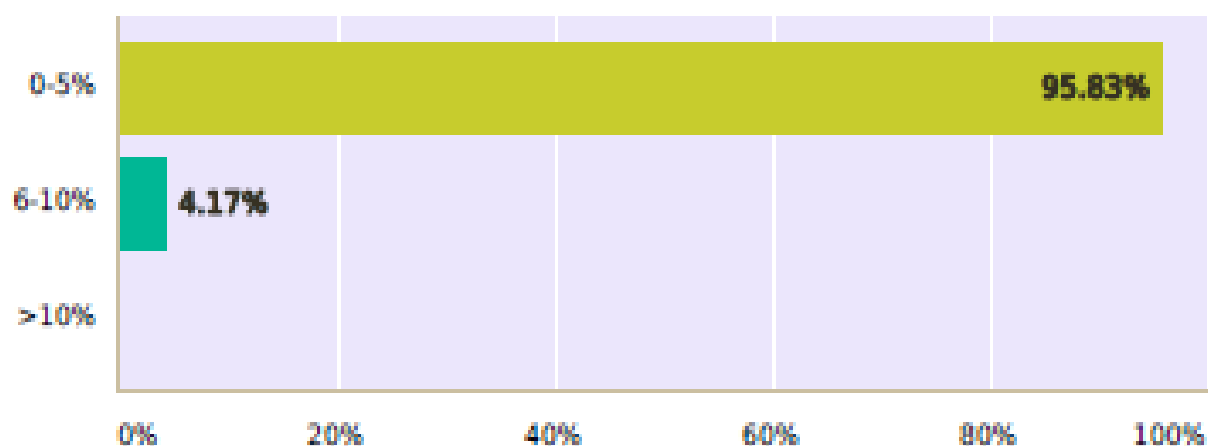


Answer Choices	Responses	Count
0-5%	13.04%	3
6-10%	21.74%	5
11-30%	30.43%	7
31-40%	8.70%	2
>40%	26.09%	6
Total		23



## Q18 Quanti pazienti in percentuale sono deceduti durante o poco dopo il trattamento per cause ascrivibili a complicanze dovute alla tossicità del trattamento?

Answered: 24 Skipped: 0



Answer Choices	Responses	
0-5%	95.83%	23
6-10%	4.17%	1
>10%	0%	0
Total		24

