

prostatectomia radicale

tecniche e risultati

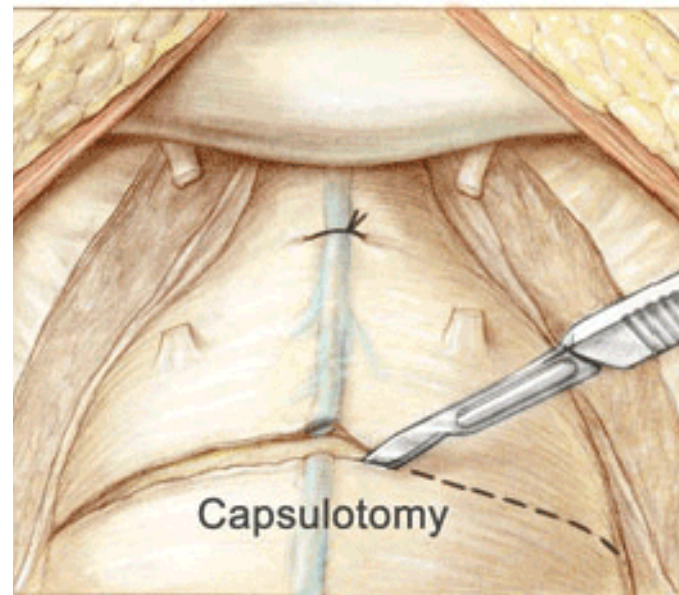
S.Benvenuti

Direttore S.C.Urologia

Ospedale Regionale Valle d'Aosta "U.Parini"

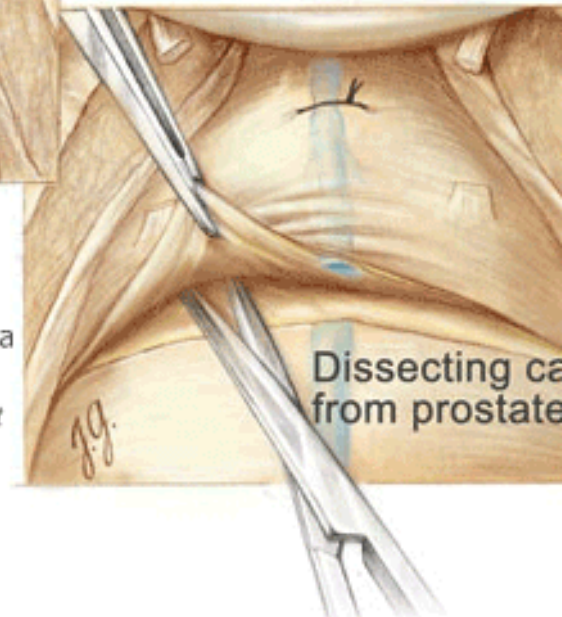
cenni storici

- 1867 primo intervento descritto: Billroth Vienna (approccio perineale)
- Young 1905 prostatectomia perineale
- 1945 Terence Millin pubblica a Londra i risultati della tecnica sovrapubica

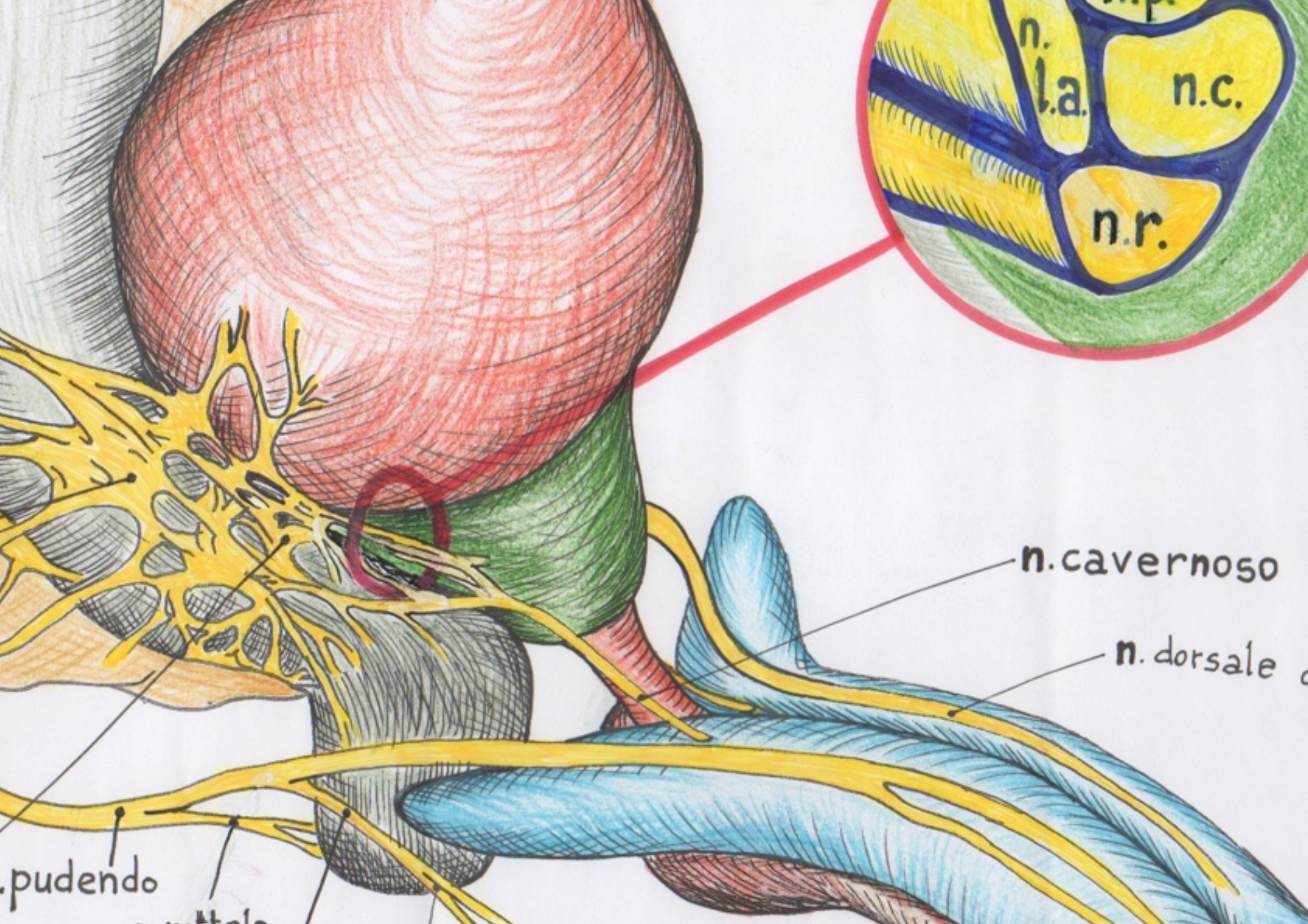


With the superficial branch of the deep vein complex secured proximally and distally, a number 15 blade on a long handle is used to make the transverse capsulotomy.

Metzenbaum scissors are used to develop the plane anteriorly between the prostatic adenoma and the prostatic capsule. (From Walsh PC: *Retroperitoneal prostatectomy for benign and malignant diseases.*)



Dissecting capsule from prostate



n.cavernoso

n.dorsale

.pudendo



n.l.a.

n.c.

n.r.

Prostatectomia laparoscopica

intervento nel 1992 descritto
da Schuessler
ripreso e rielaborato da
Guillonneau e Gaston che ne
hanno standardizzato la tecnica



RARP

Robot Assisted Radical Prostatectomy

1° intervento effettuato da
Binder e Kramer nel 2000
BJU 2001



RISULTATI

- Margini chirurgici
- Continenza urinaria
- Mantenimento erezione

Review: Radical prostatectomy: comparisons of different approaches
 Comparison: 07 Positive surgical margin rate
 Outcome: 03 Positive surgical margin rate: RRP vs. RARP

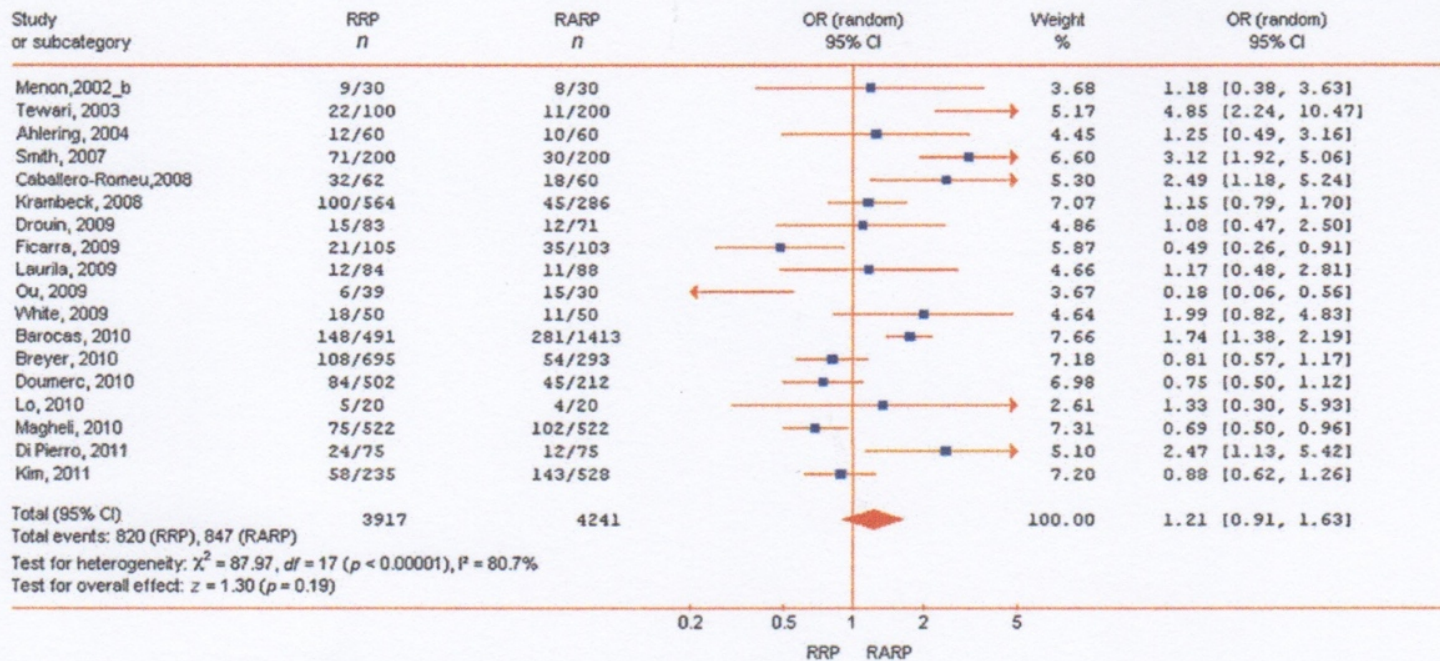
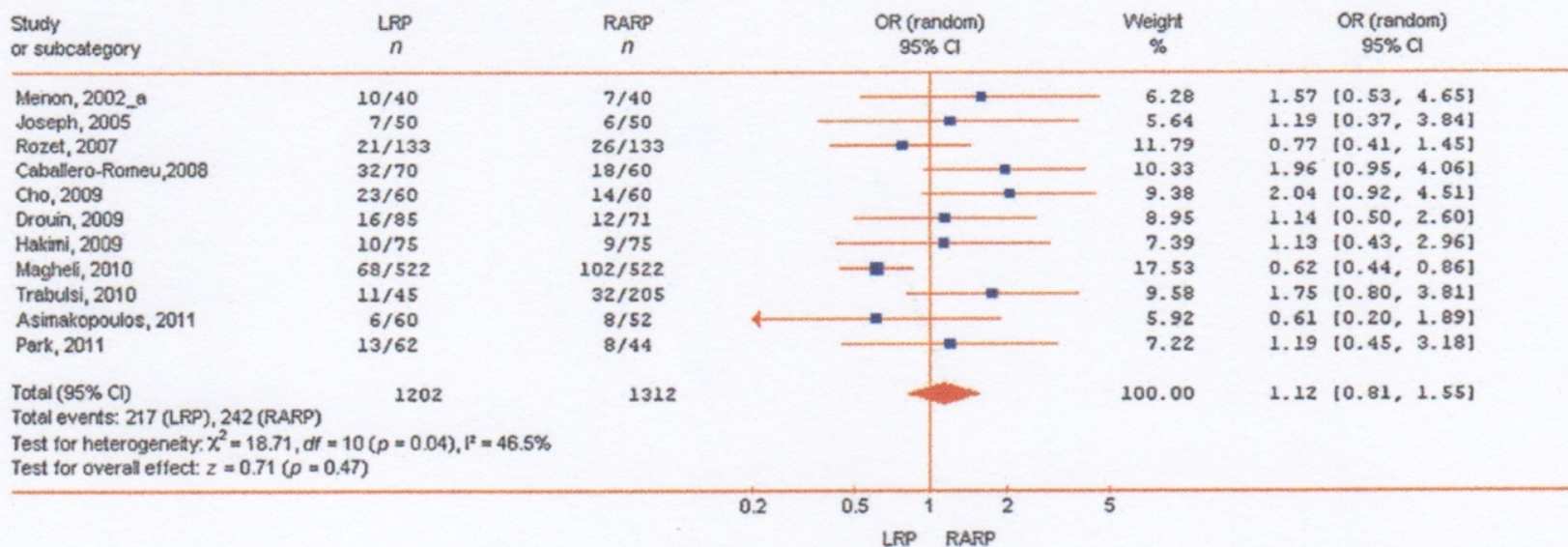


Fig. 2 – Cumulative analyses of overall positive surgical margin rates following robot-assisted radical prostatectomy or retropubic radical prostatectomy
 RARP = robot-assisted radical prostatectomy; RRP = retropubic radical prostatectomy.

margini chirurgici

RRP vs RARP

Review: Radical prostatectomy: comparisons of different approaches
 Comparison: 07 Positive surgical margin rate
 Outcome: 05 Positive surgical margin rate: LRP vs. RARP



Cumulative analyses of overall positive surgical margin rates following robot-assisted radical prostatectomy or laparoscopic radical prostatectomy; RARP = robot-assisted radical prostatectomy.

Margini chirurgici

LRP vs RARP

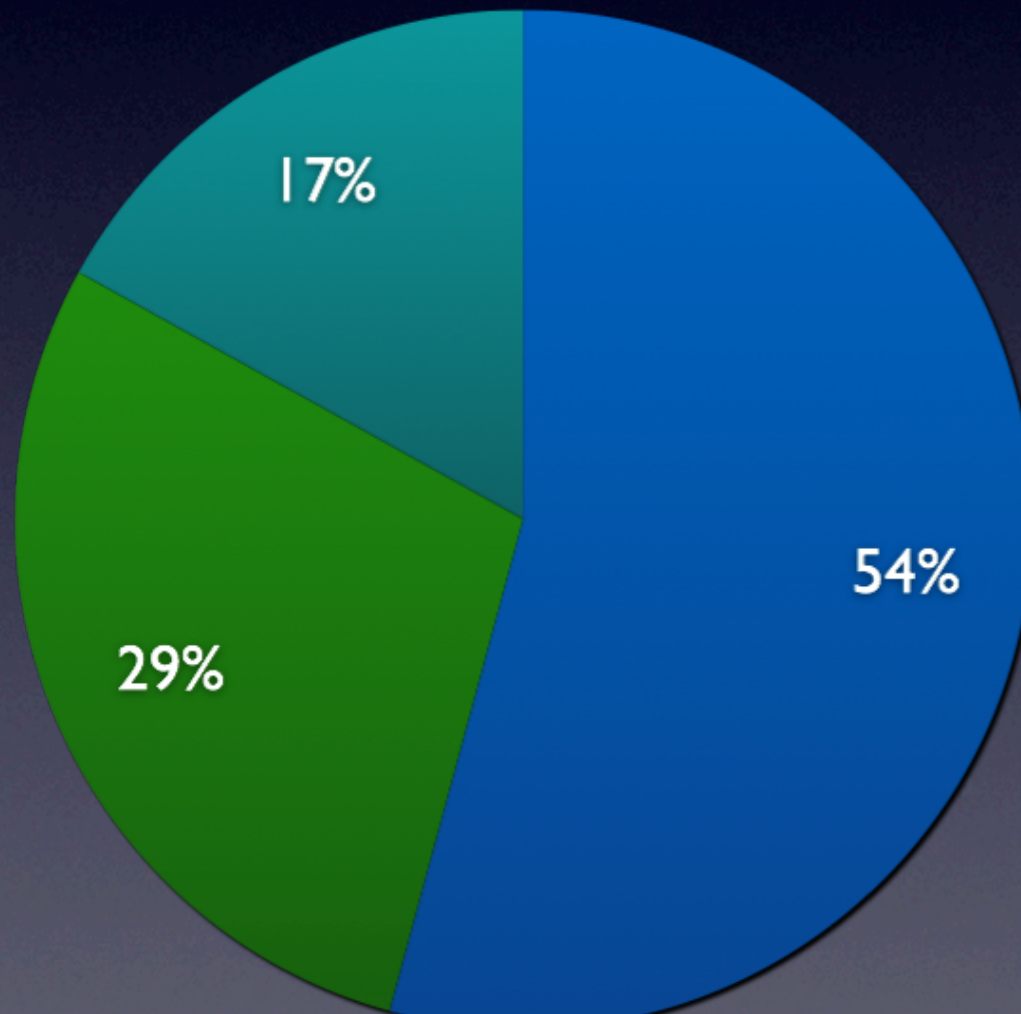
RRP	62	56.5
LRP	60.5	43.1
RARP	61.1	68.1
intervento	età media	conservazione erezione

Risultati dopo prostatectomia NS

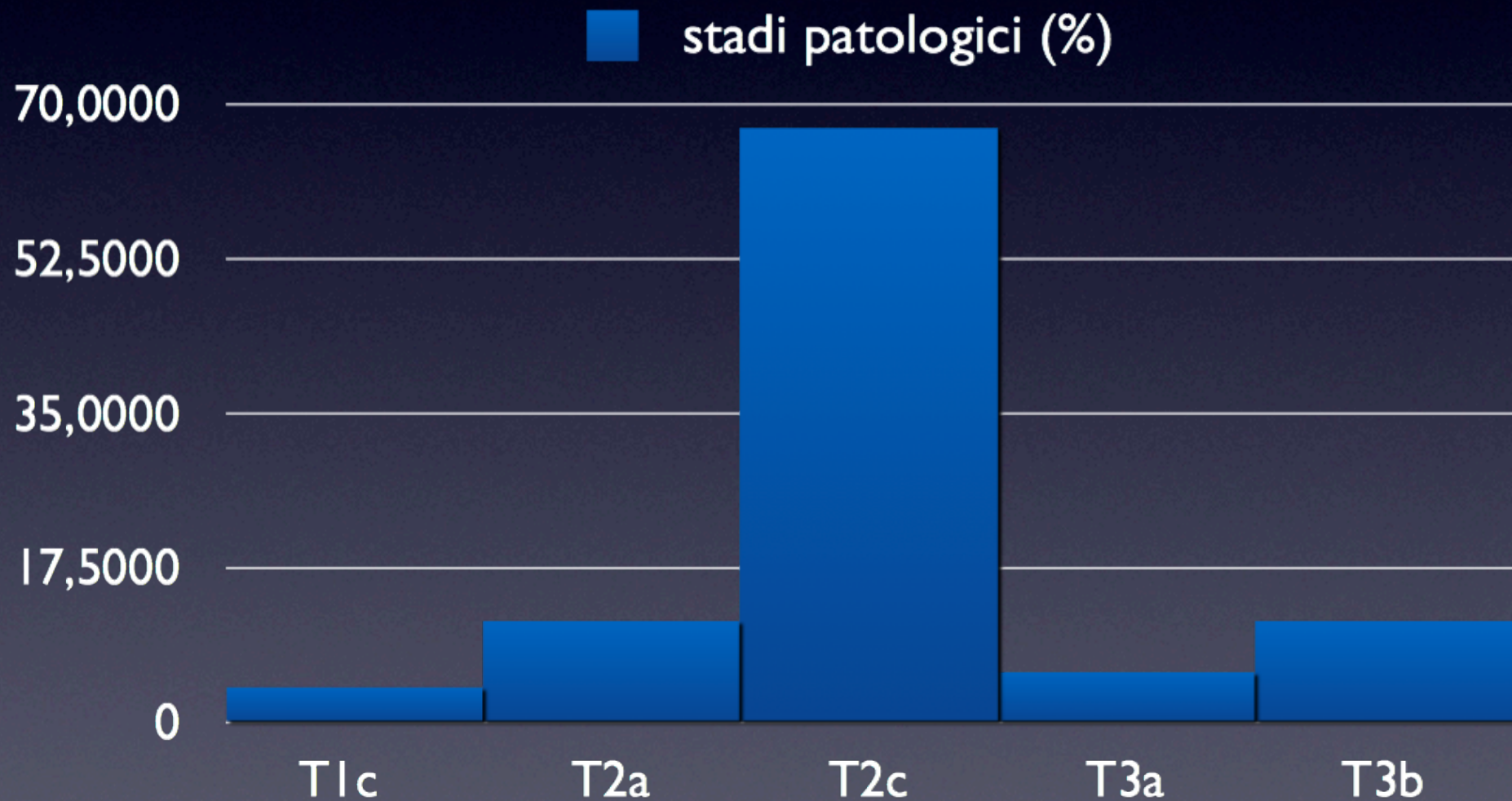
author	surgical procedure	institution	urinary continence rate %	potency%
WALSH	RRP	Johns Hopkins Baltimore	3mo 54 6mo 80 12mo 93	12mo 73 18mo 86
Guillonneau	LRP	Montsouris Paris	3mo 59,6 6mo 73,3 12mo 82,3	6mo 66 12mo 76
Patel	RARP	Columbus Ohio	3mo 89 6mo 95 12mo 97	12mo 78

tipo di intervento

● ns bilaterale ● ns monolaterale ● extrafasciale



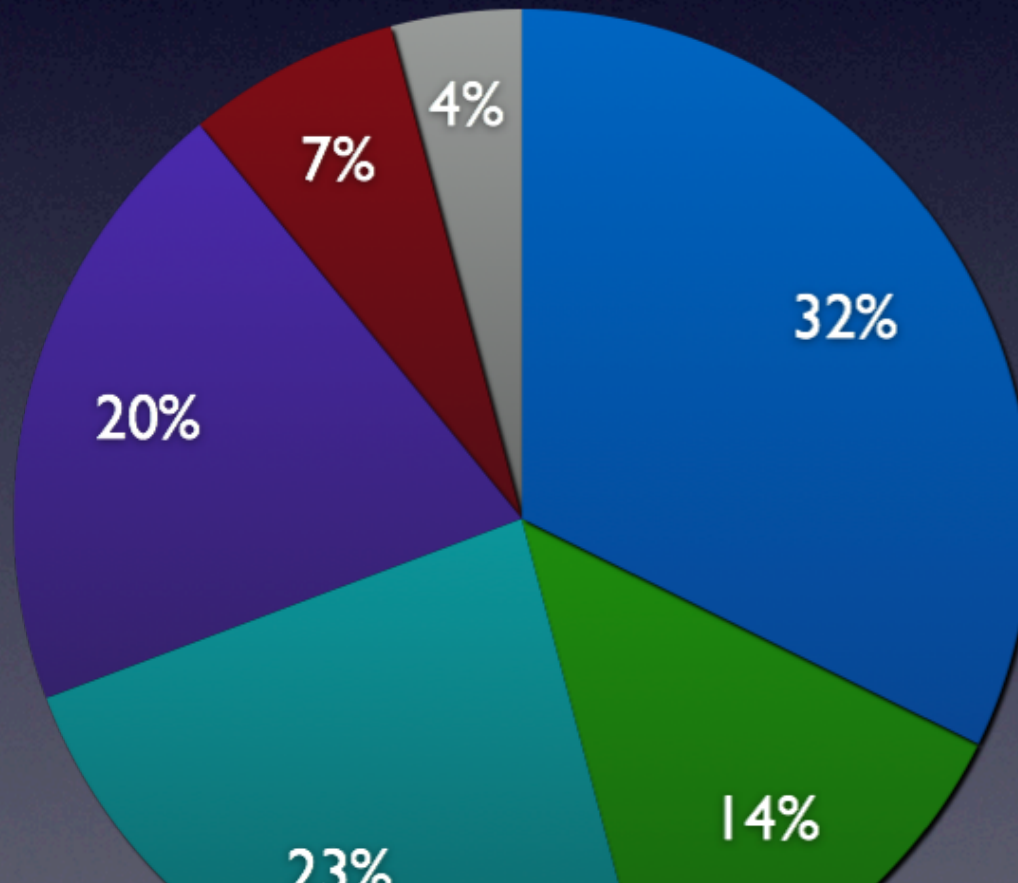
distribuzione pT 2009-2011 (238 pz)



Risultati: margini chirurgici

- pT2 = 11% margini positivi
- pT3 = 29% margini positivi

Ripresa della competenza postoperatoria



12 mo

18 mo

24 mo

70

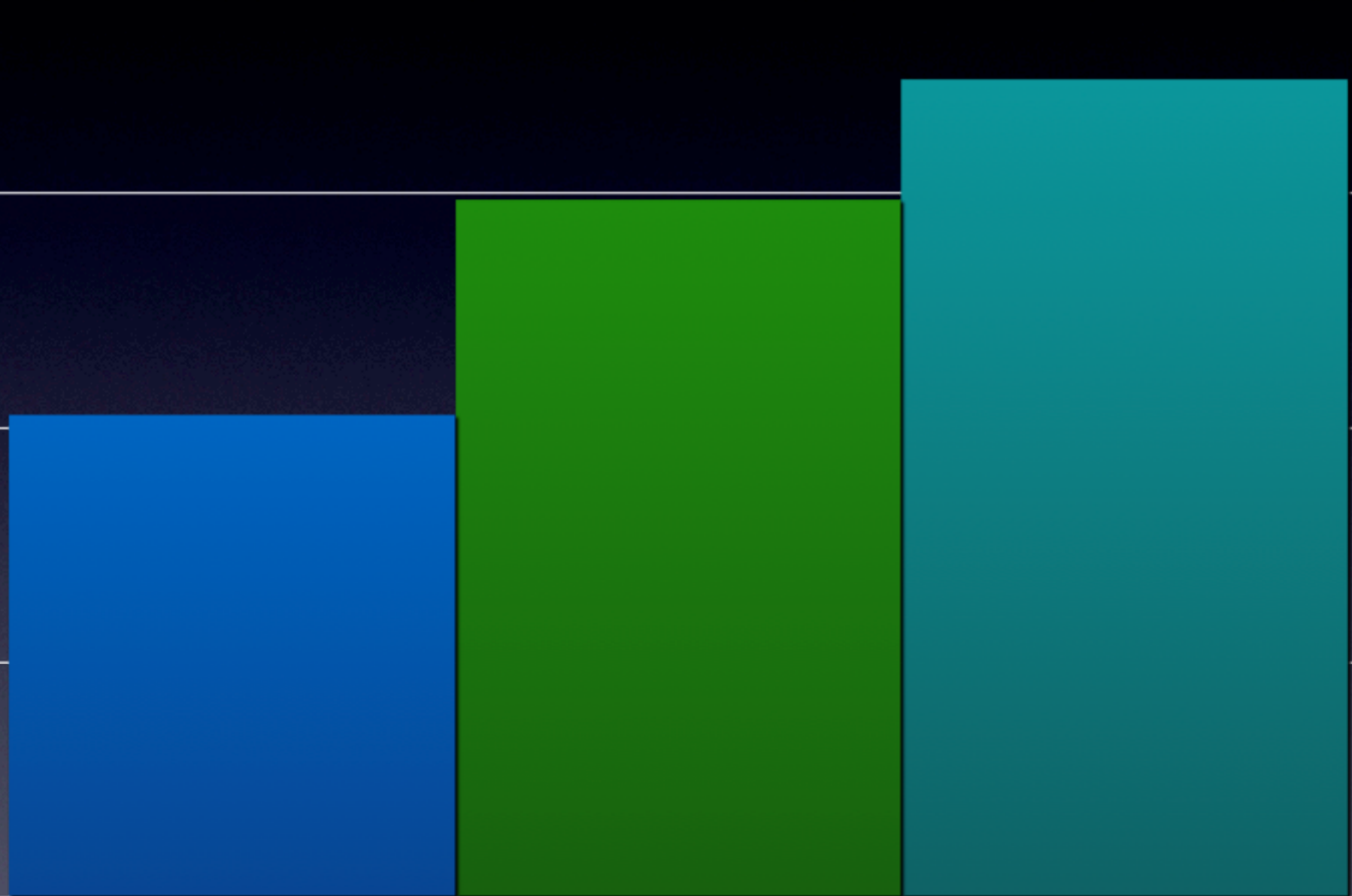
53

35

18

0

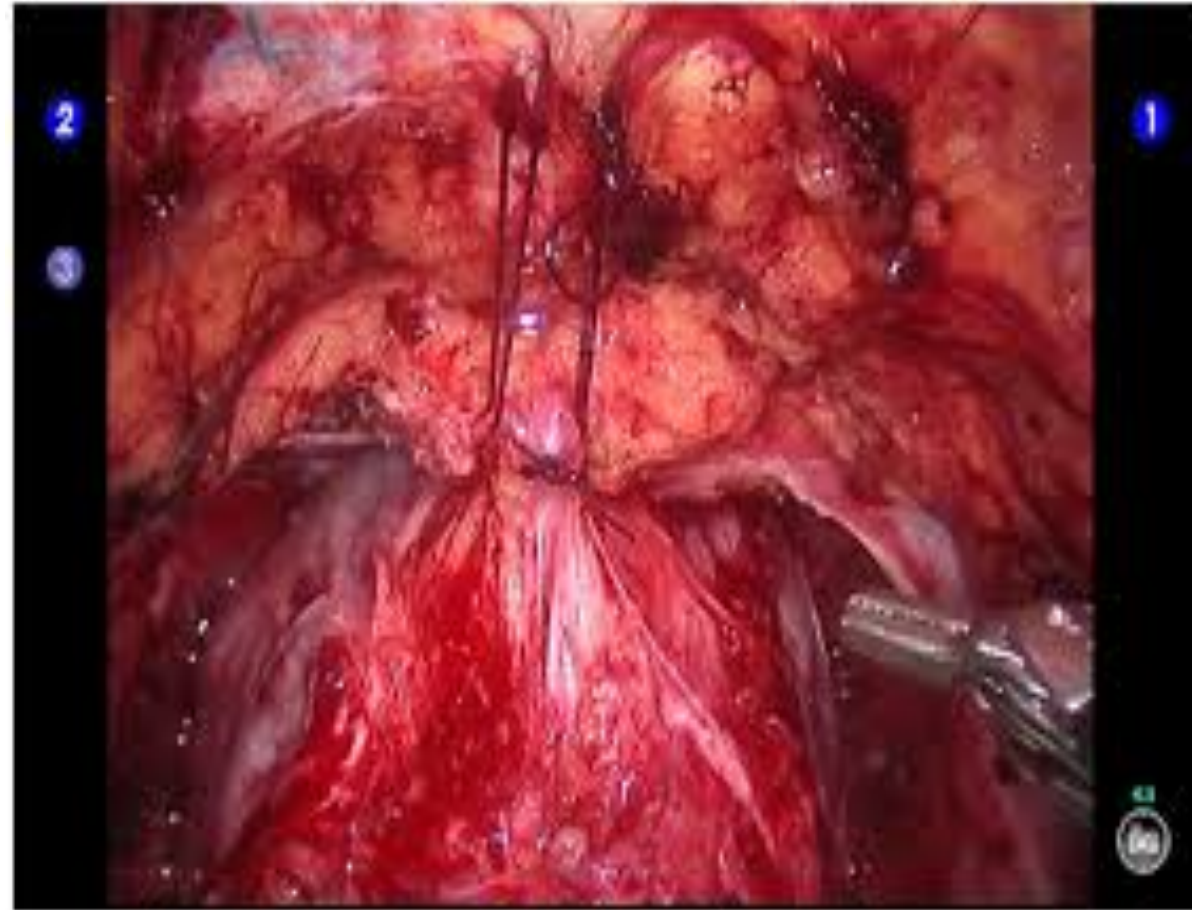
recupero potenza sessuale



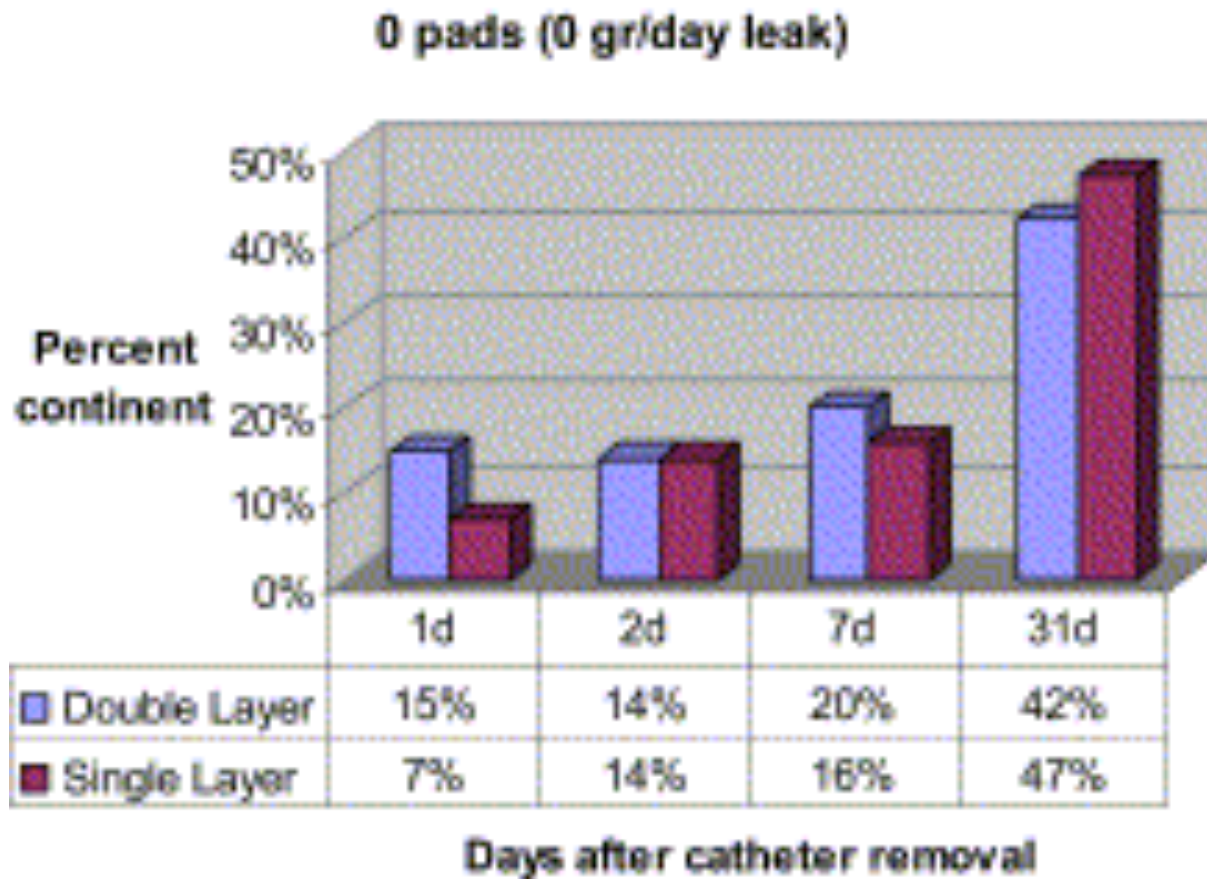
prostatectomia radicale. Come migliorare l'outcome?

- RARP per la salvage prostatectomy
- ricostruzione dei piani anteriori e posteriori all'anastomosi (Menon)
- ecodoppler intraoperatorio in corso di RARP

tecnica doppio strato



Risultati continenza con tecnica doppio strato (Menon)





Grazie!