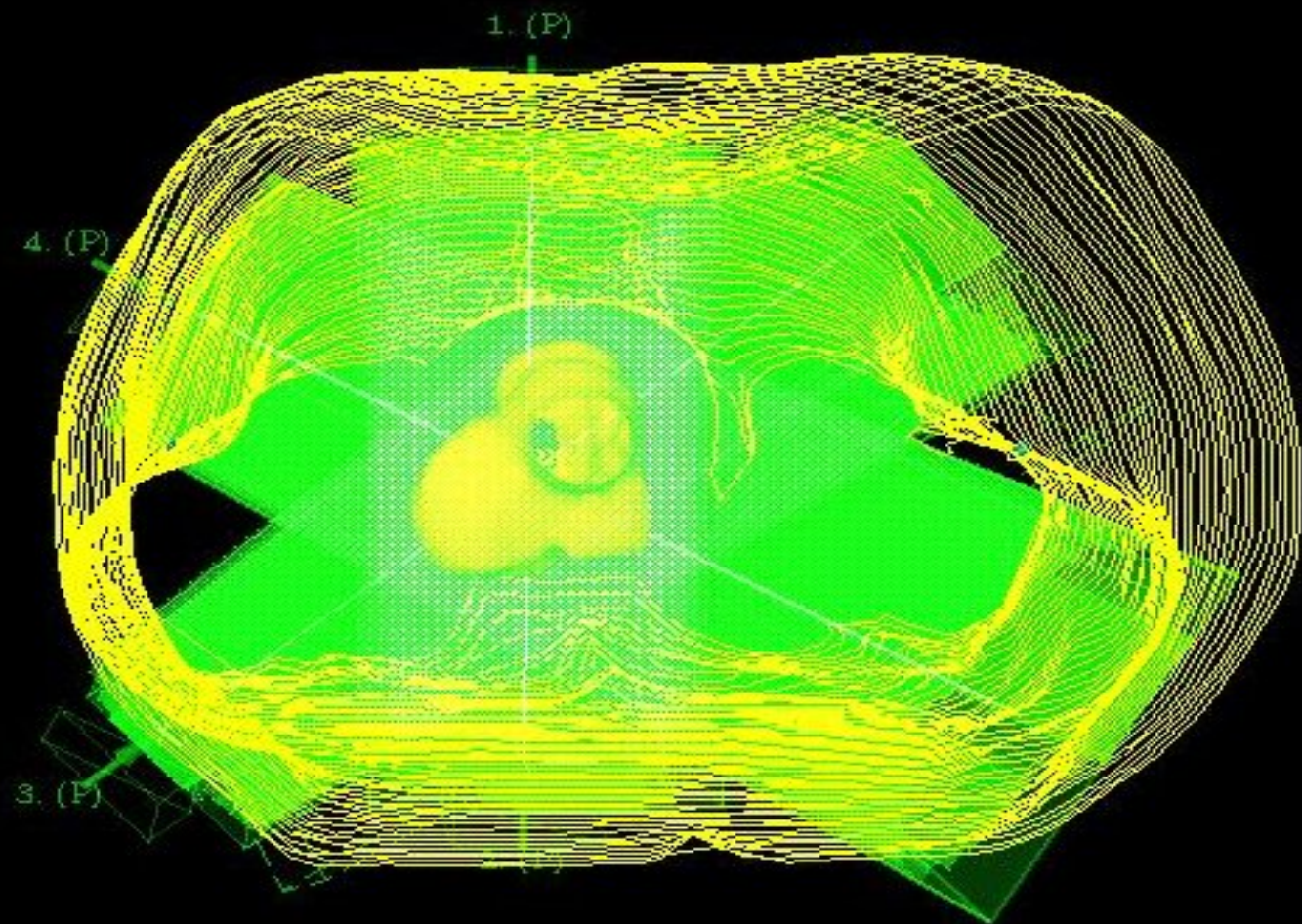


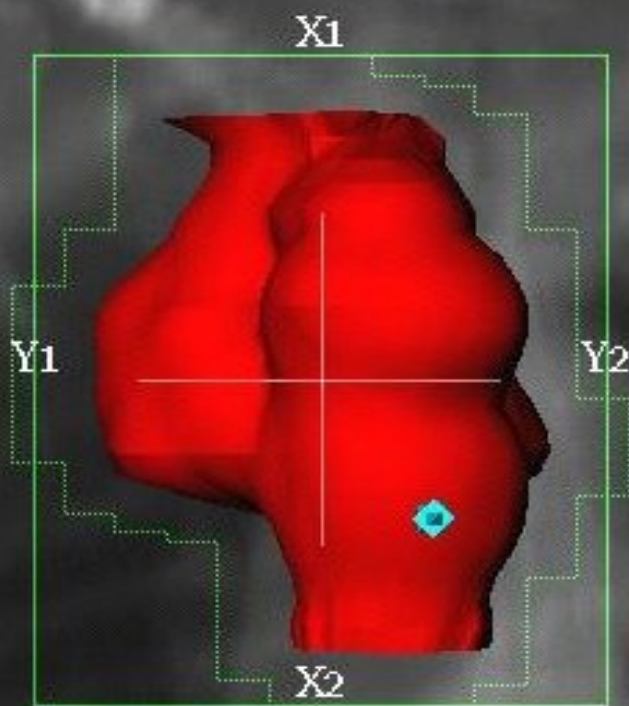
ESERCITAZIONE

I caso clinico – RT + CT

- Paziente M; età 62 aa, fumatore, I.K. 90
- APR: BPCO
- Gennaio 2004 emoftoe , Giugno 2004 broncoscopia con diagnosi di ca. squamoso G3, T2 pN2 alla mediastinoscopia
- Luglio 2004 inizia CT con CDDP + GEM x 3 cicli
- Rivalutazione TC ottobre 2004: RP minore con persistenza impegno mediastinico – yT2 N2 M0
- Gennaio 2005 inizia RT 66 Gy in 33 frazioni; Conformazionale-3D con 4 campi isocentrici complanari 10 e 18 Mv
- CT concomitante con CDDP + NVB x 2 cicli

OEV





Cuneo_10MV

POL_AP_0

Cuneo_10MV

X2

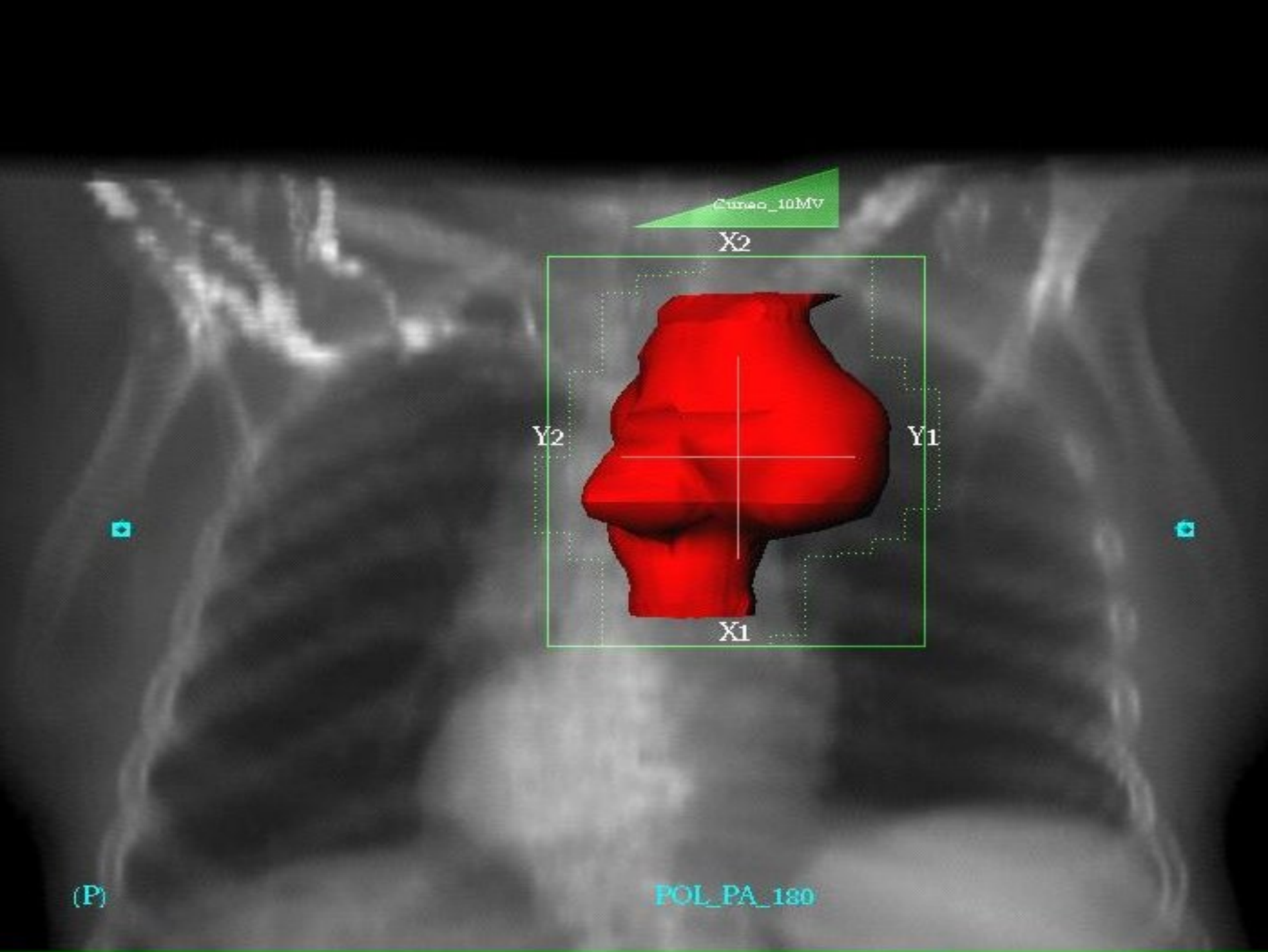
Y2

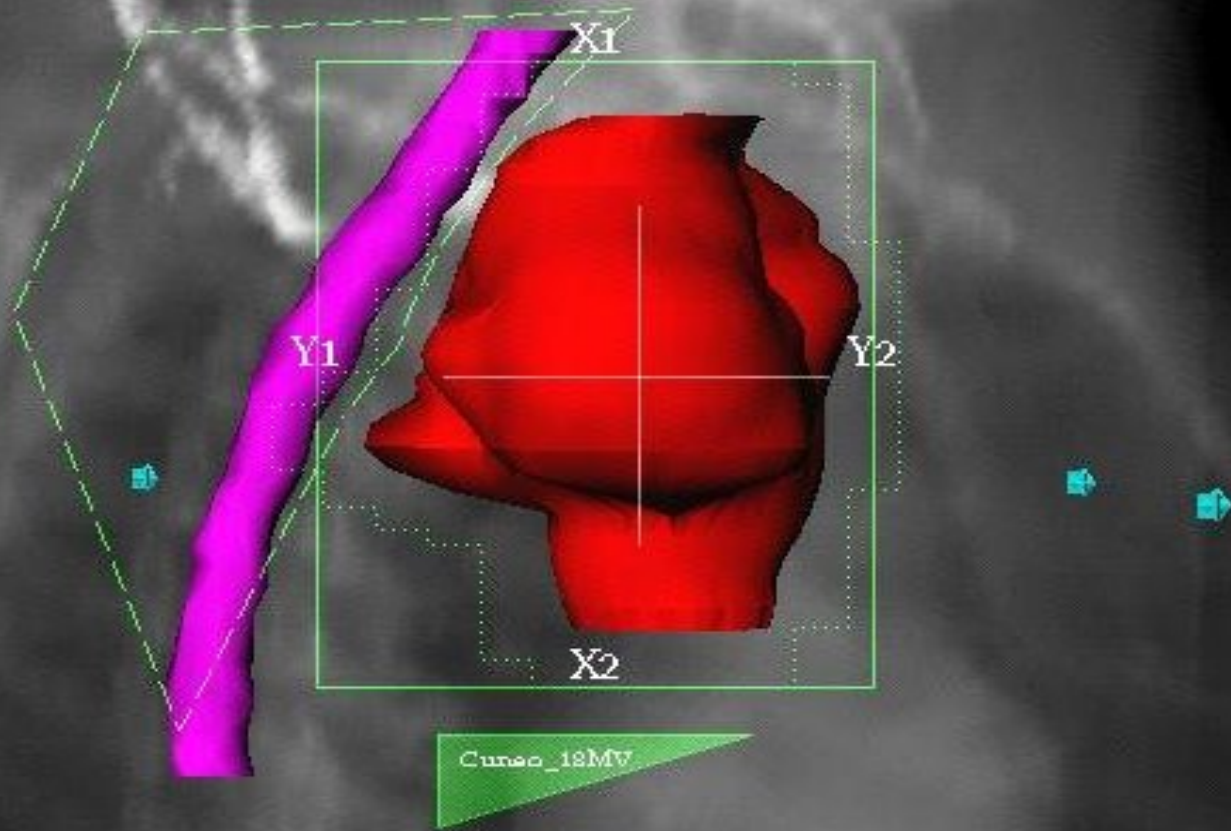
Y1

X1

(P)

POL_PA_180





POL_OBL_230

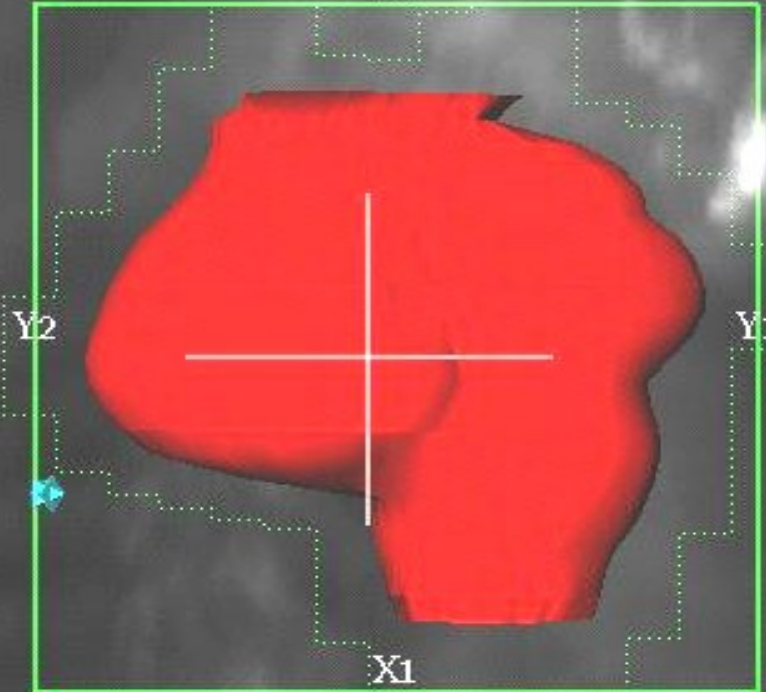
Cuneo_18MV

X2

Y2

Y1

X1

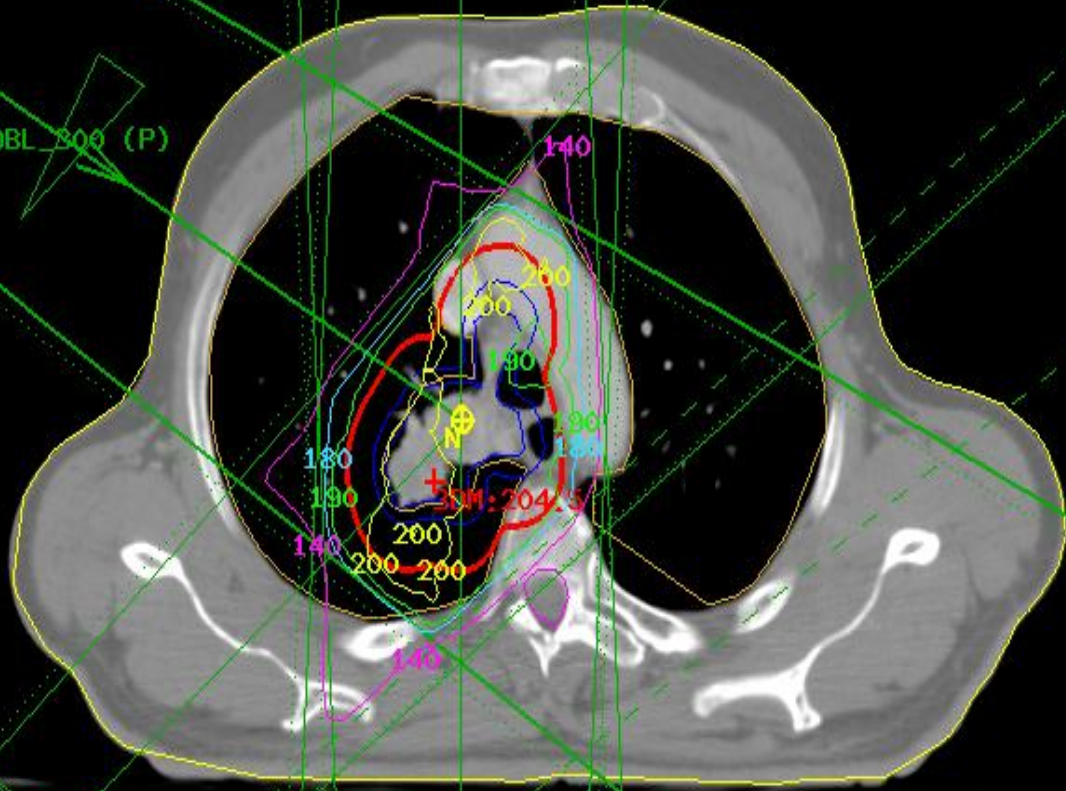


3D Grid
3.9 [mm]
Absolute

1.POL_AP_0 (P)

4.POL_OBL_300 (P)

- 140
- 180
- 190
- 200
- 210
- 220
- 230



3.POL_OBL_230 (P)

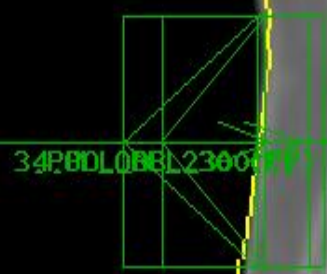
#43 Z: -1240.5 [mm]

2.POL_PA_180 (P)



3D Grid
3.9 [mm]
Absolute

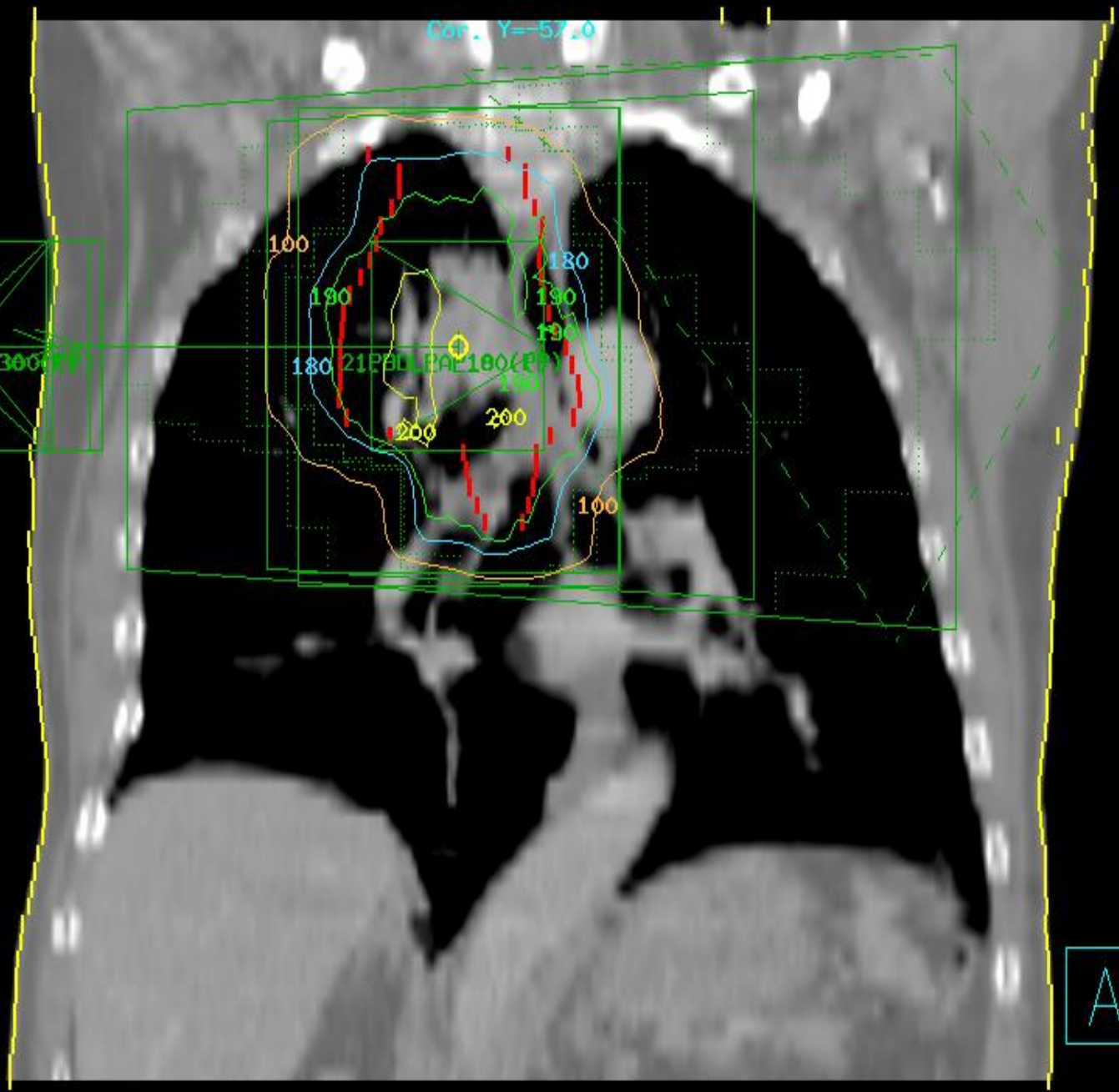
Cor. Y=-57.0



- 100 ———
- 180 ———
- 190 ———
- 200 ———
- 210 ———
- 220 ———
- 230 ———

Y:-57.0 [mm]

A



3D Grid
3.9 [mm]
Absolute

Sag. X=-15.0

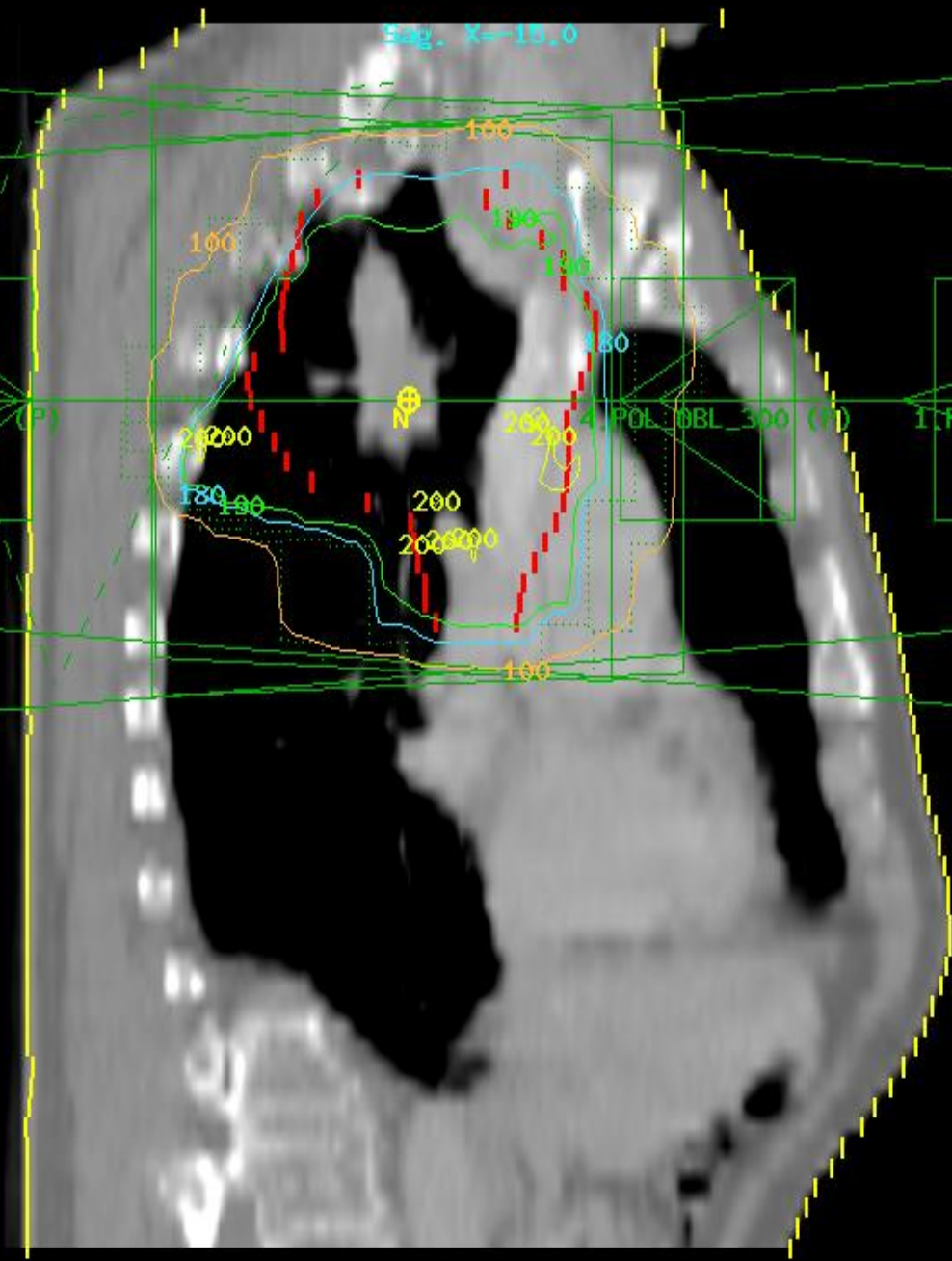
2.POL_BOPOBOOSE)230 (P)

4.POL_OBL_300 (P)

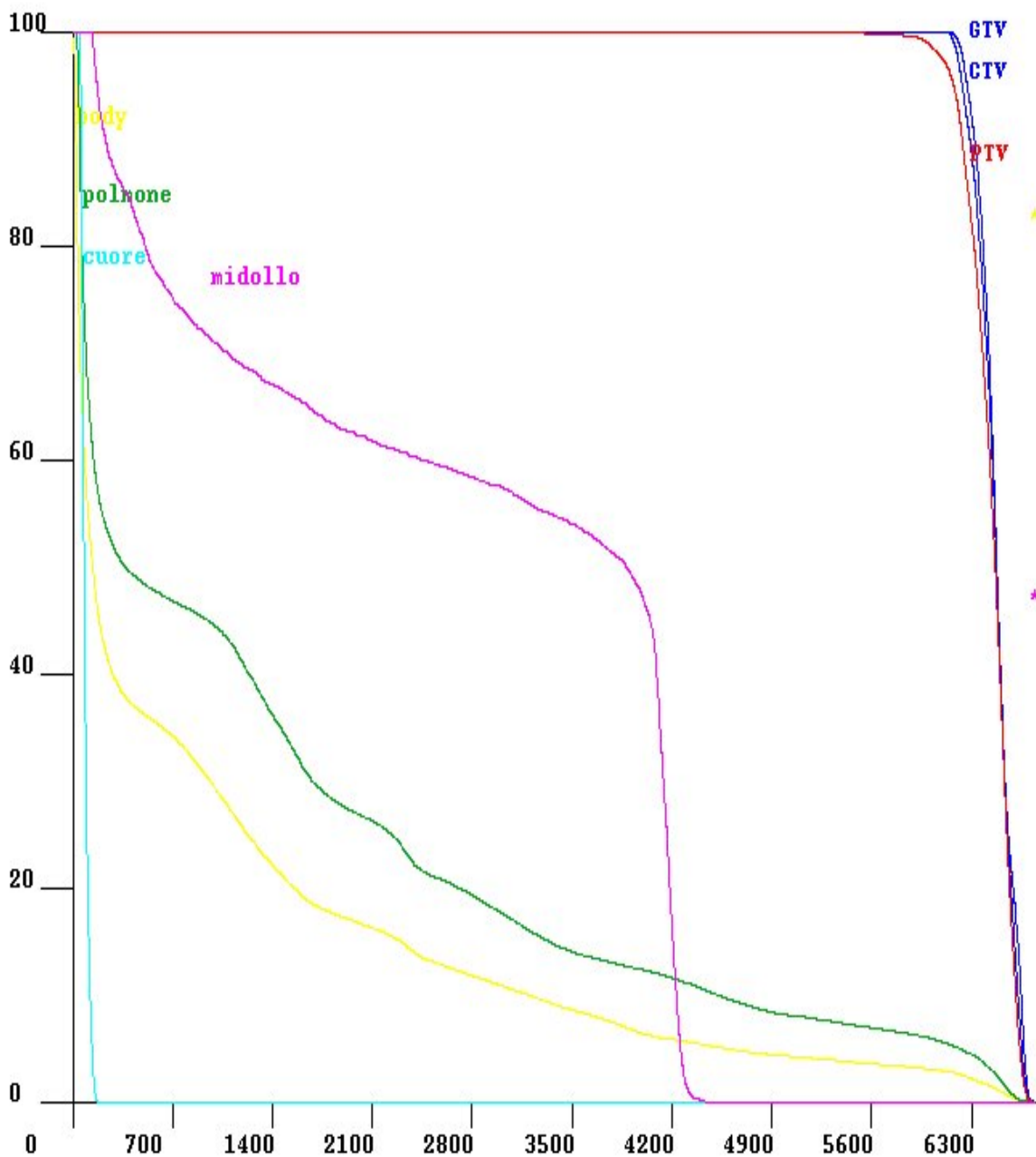
1.POL_AP_0 (P)

- 100 ———
- 180 ———
- 190 ———
- 200 ———
- 210 ———
- 220 ———
- 230 ———

X:-15.0 [mm]



Volume [%] # of points: 100000
 Max. Dose [cGy]: 6747

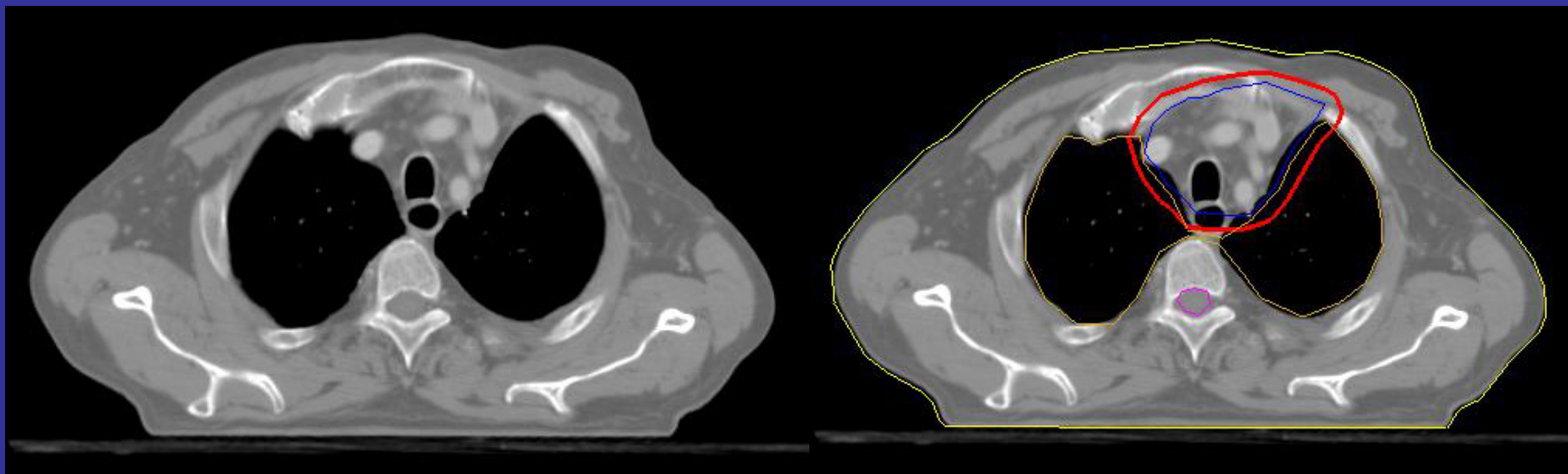


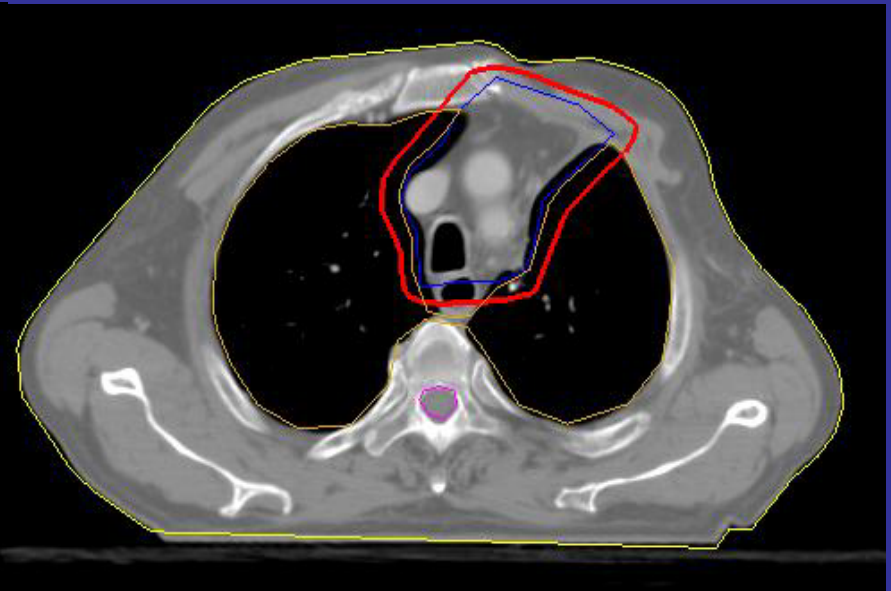
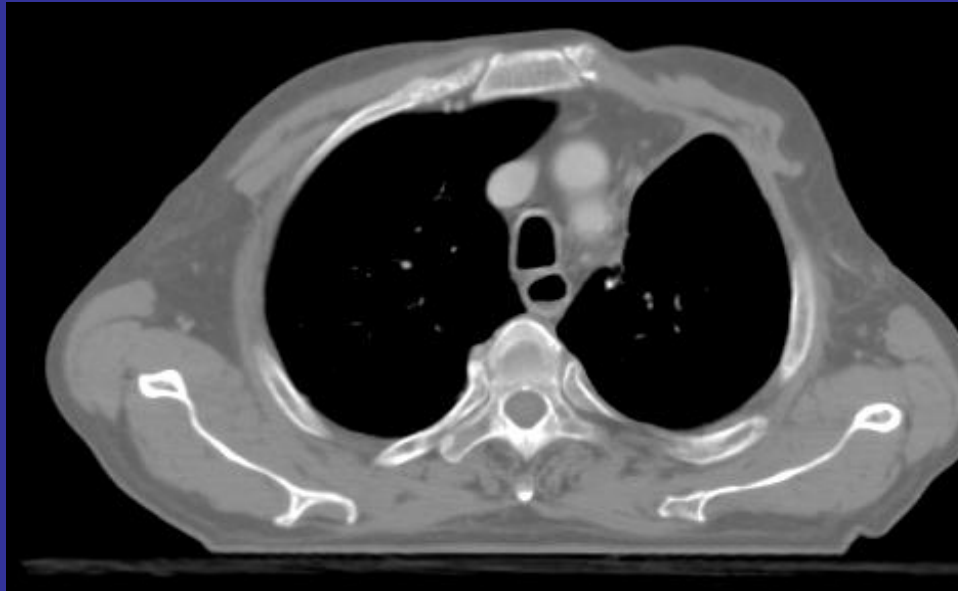
VOI	Vol. (cc)	Area (%)	Dose (cGy)		
			Max	Min	Avg.
GTV	84.7	95	6716	6142	6476
CTV	180.0	95	6734	6094	6462
* body	23283	13	6711	0	942
PTV	418.2	95	6718	4686	6434
polmon	5316.1	21	6687	19	1436
cuore	368.4	1.3	169	46	85
midoll	29.0	40	4430	130	2700

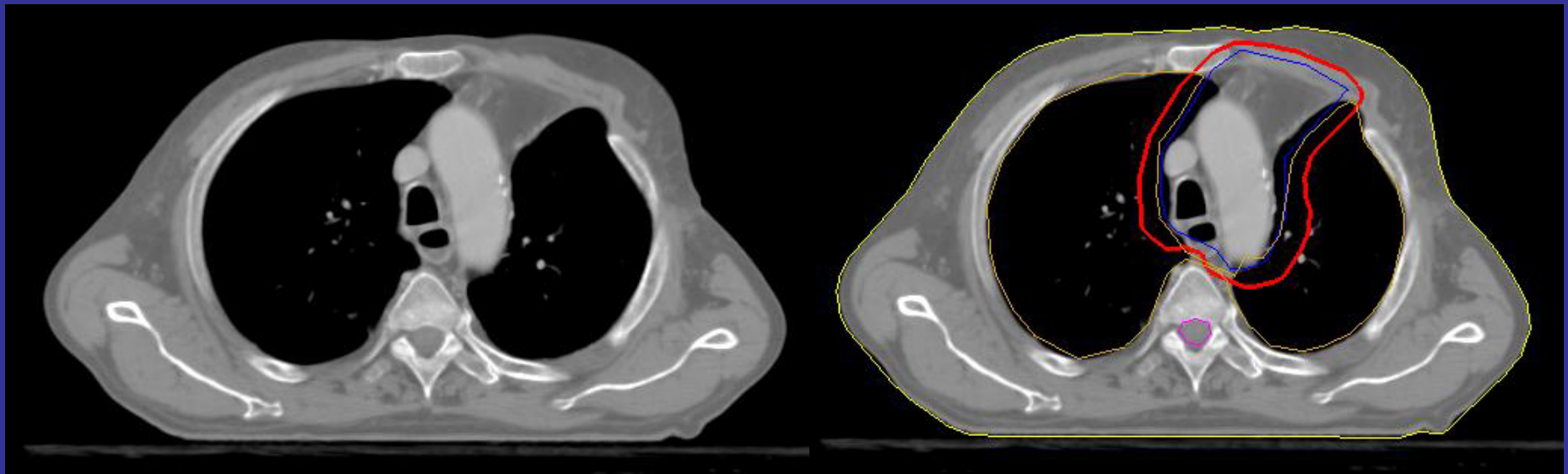
* (could be incomplete)

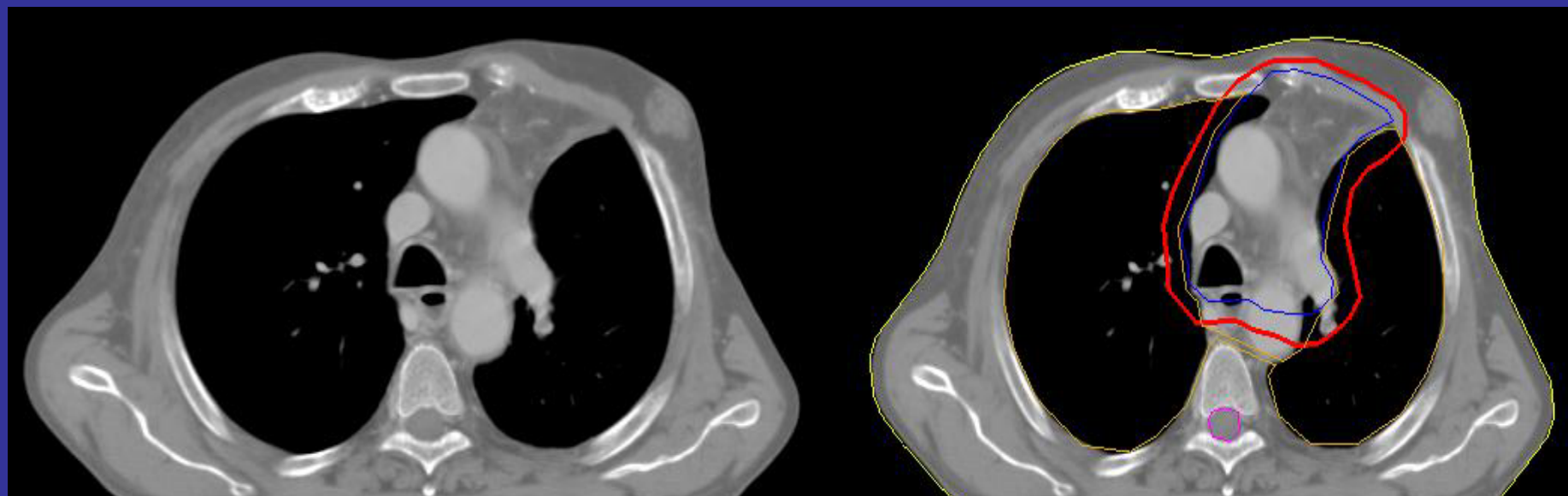
Il caso clinico – RT PO

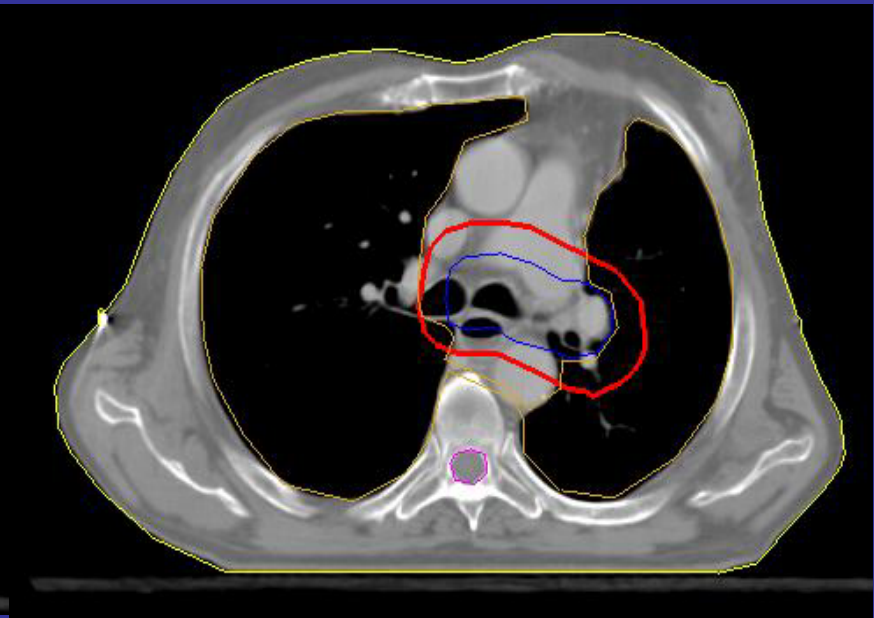
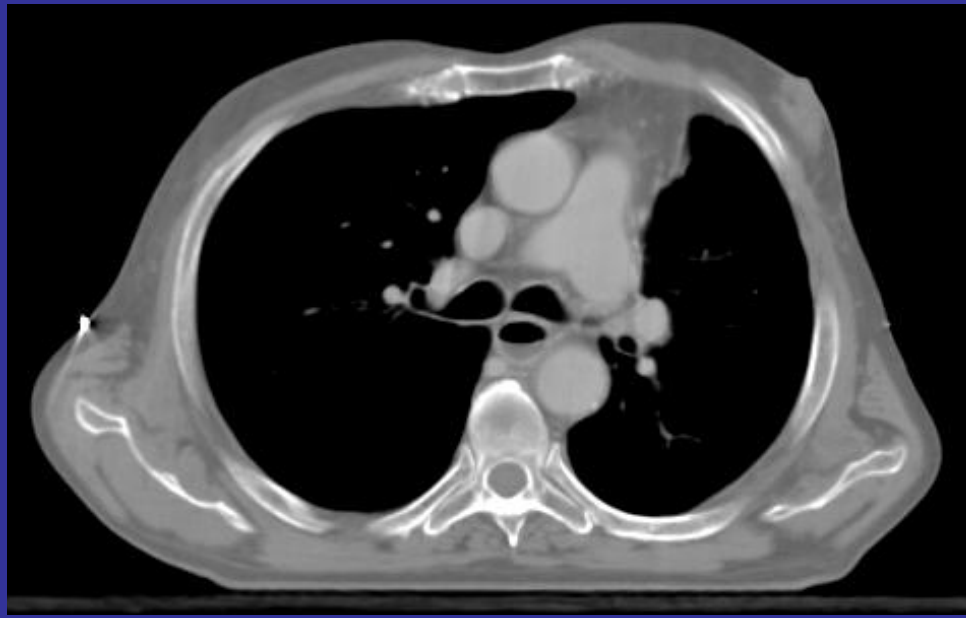
- Paziente M; età 65 aa, fumatore, I.K. 80
- APR: BPCO , cardiopatia ischemica
- Ottobre 2004 Lobectomia sup. sx con accesso antero-laterale sx con asportazione II e III costa per processo espansivo scavato di 5,4 cm infiltrante la pleura e tessuti pericostali. Linfadenectomia mediastinica – pT3 N2 M0
- Gennaio 2005 inizia CT con CDDP + GEM x 3 cicli
- Ca. squamoso G2; margini di resezione indenni (R0); metastasi massiva in un linfonodo subaortico (4L)
- 50 Gy in 25 frazioni; Conformazionale-3D con 4 campi isocentrici complanari 6 e 10 Mv

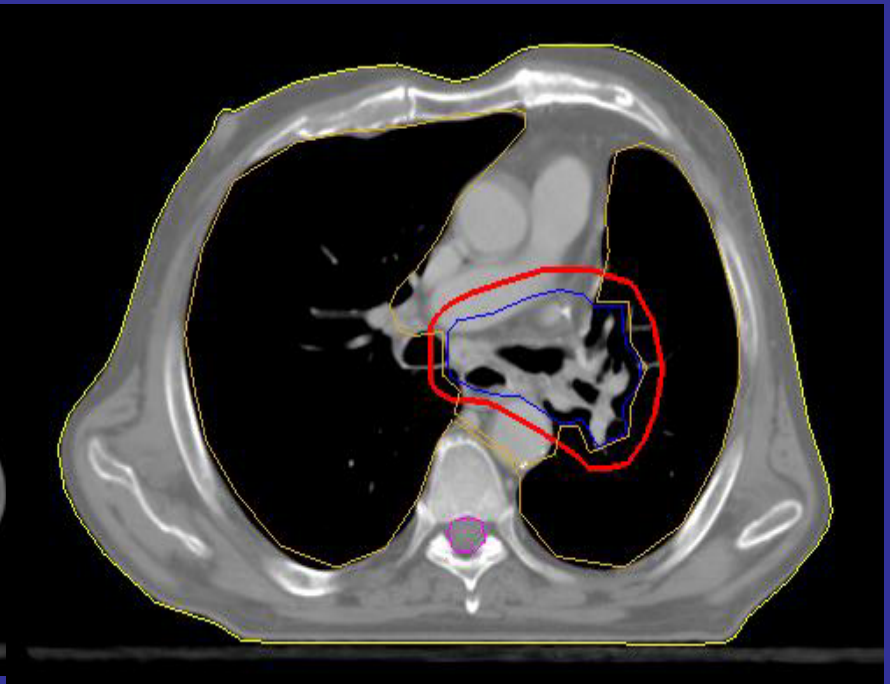
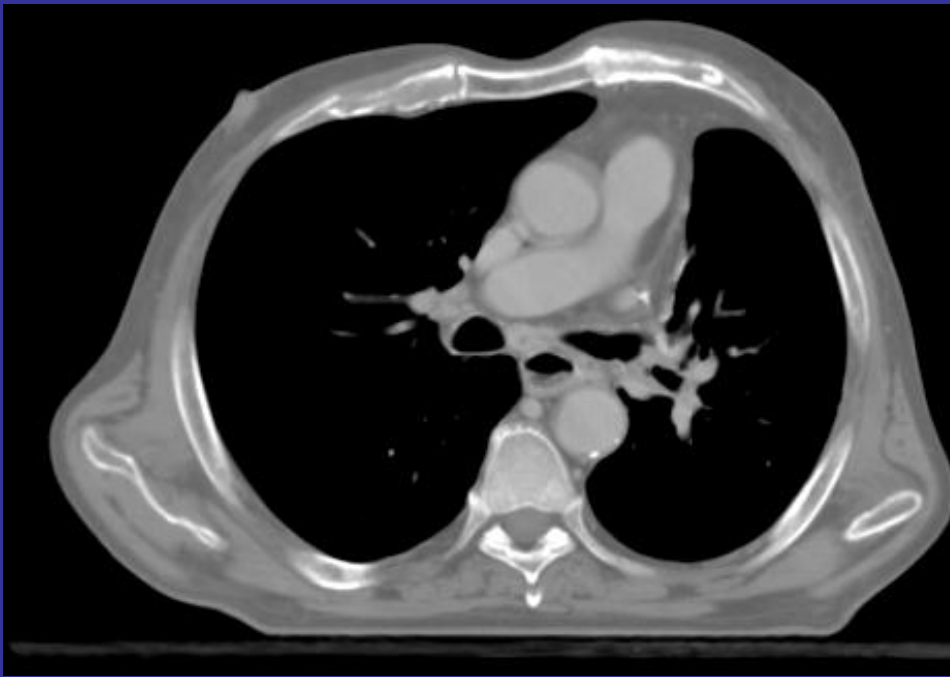


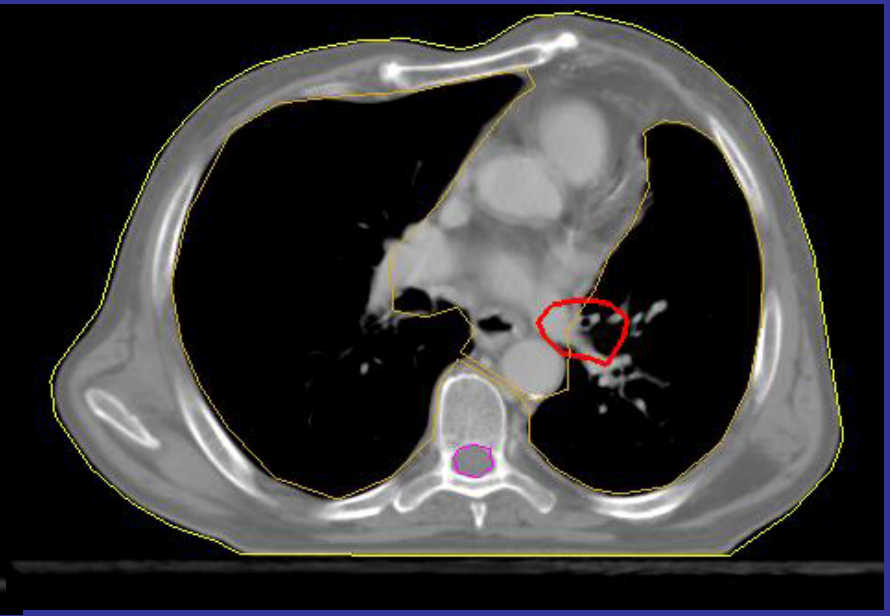
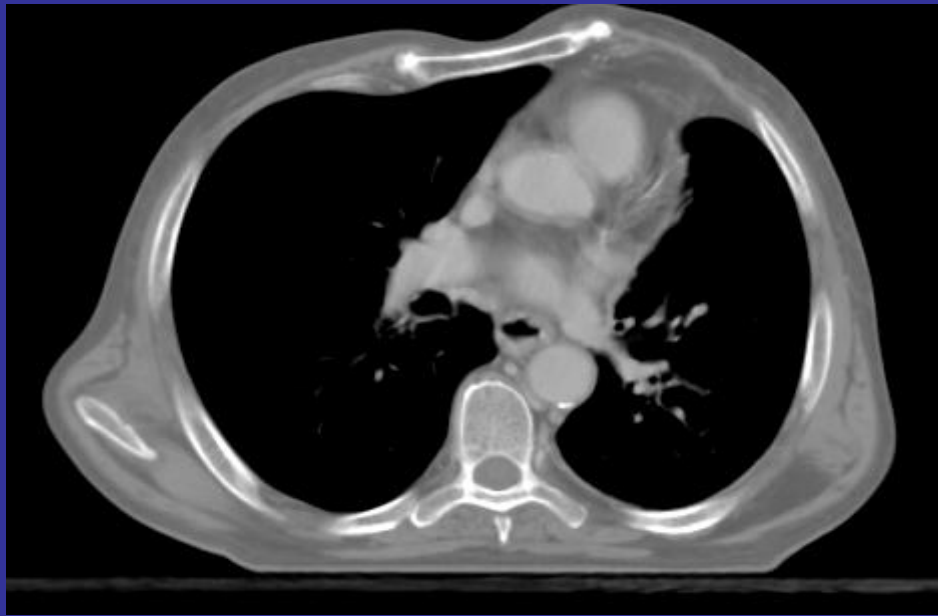




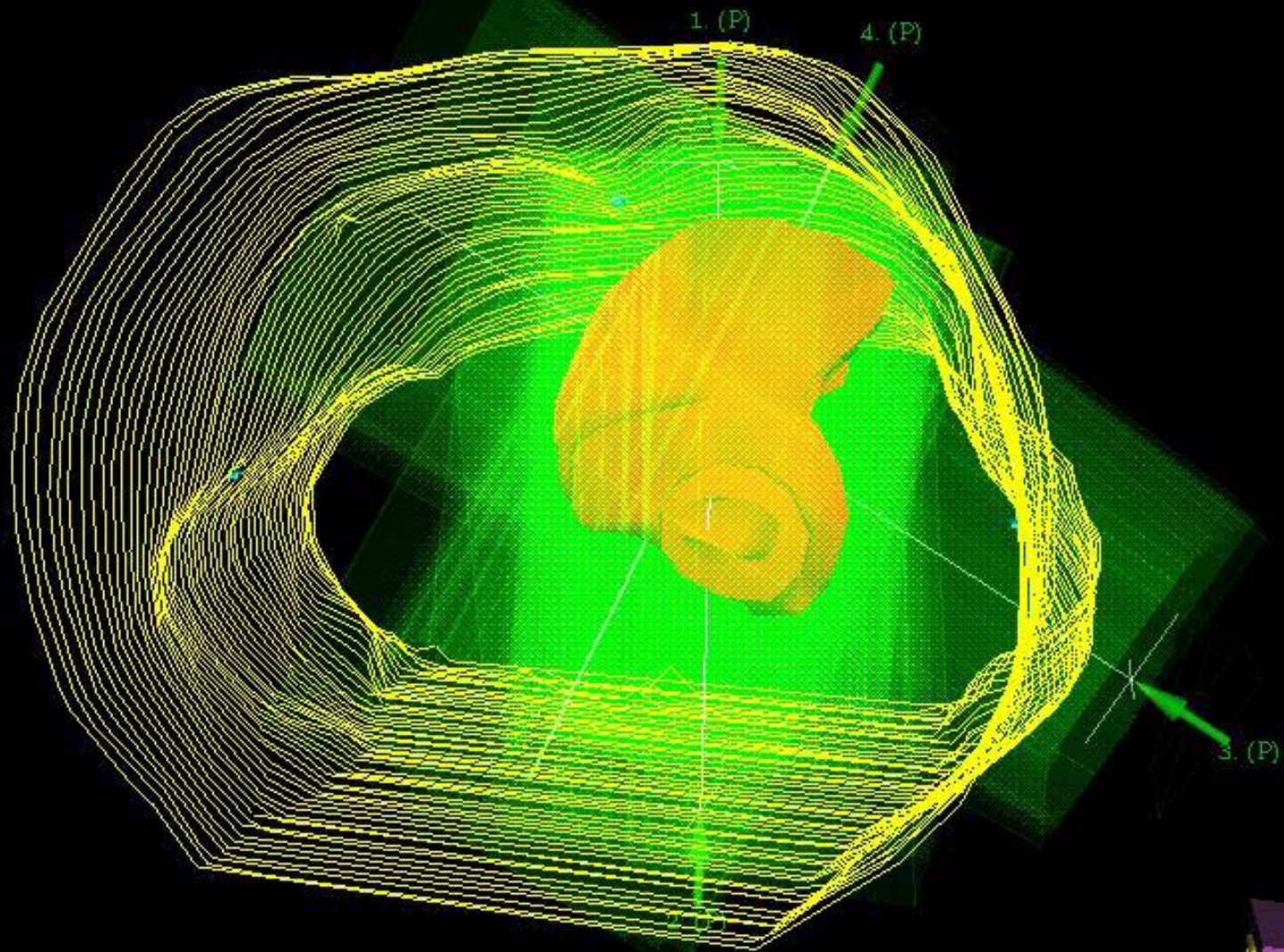








OEV



Curso_EMV

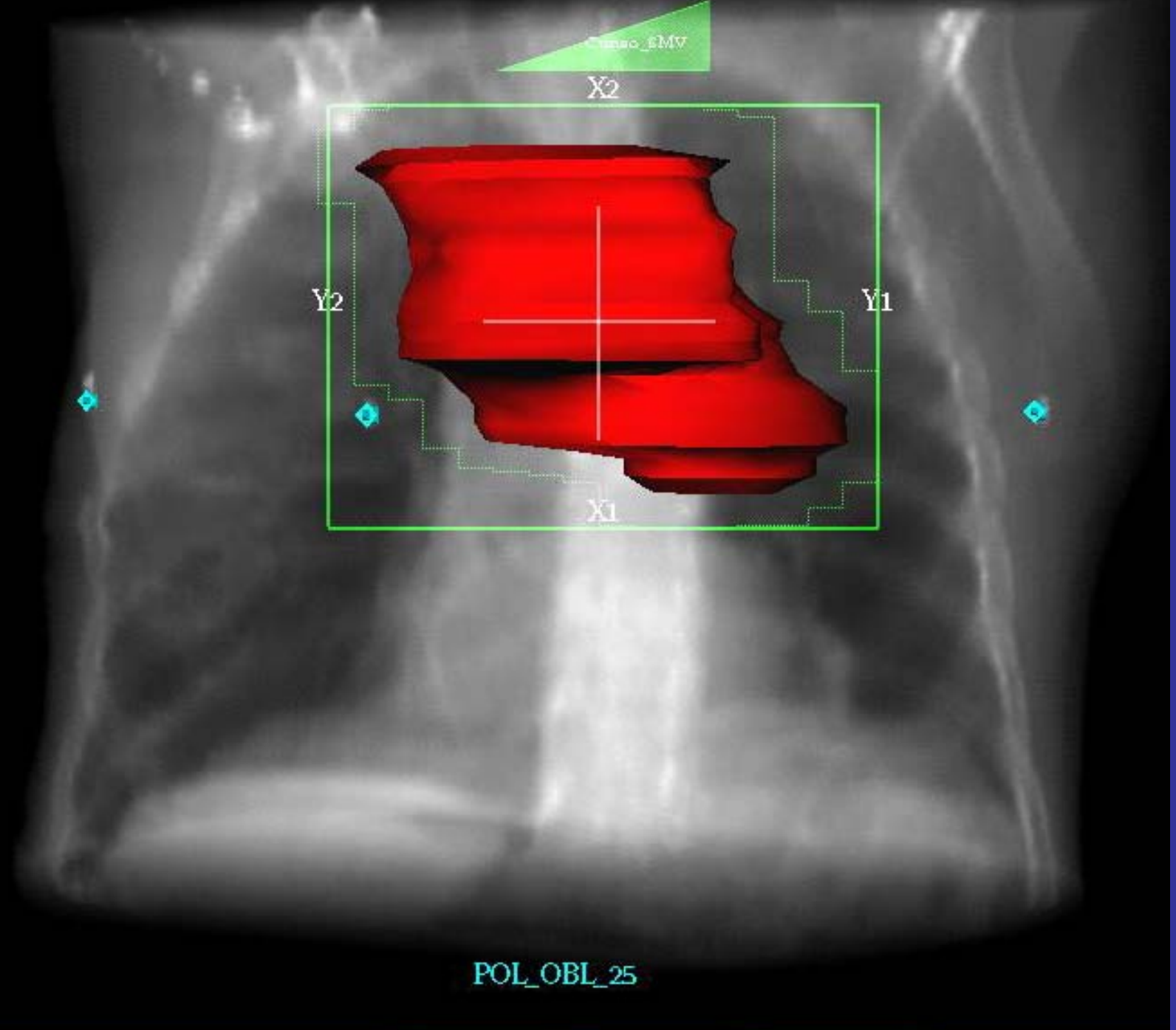
X2

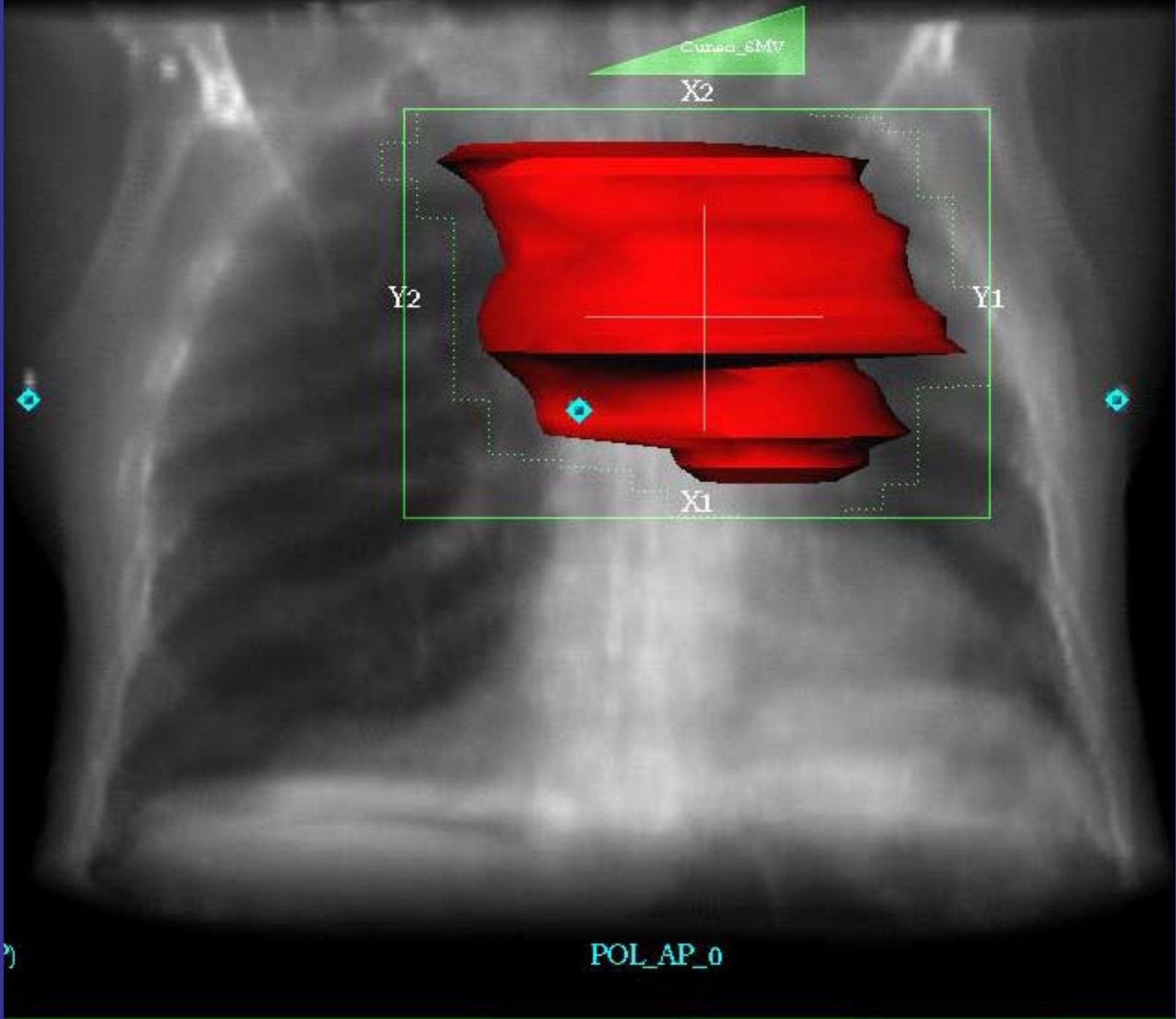
Y2

Y1

X1

POL_OBL_25





Cuneo_SMV

X2

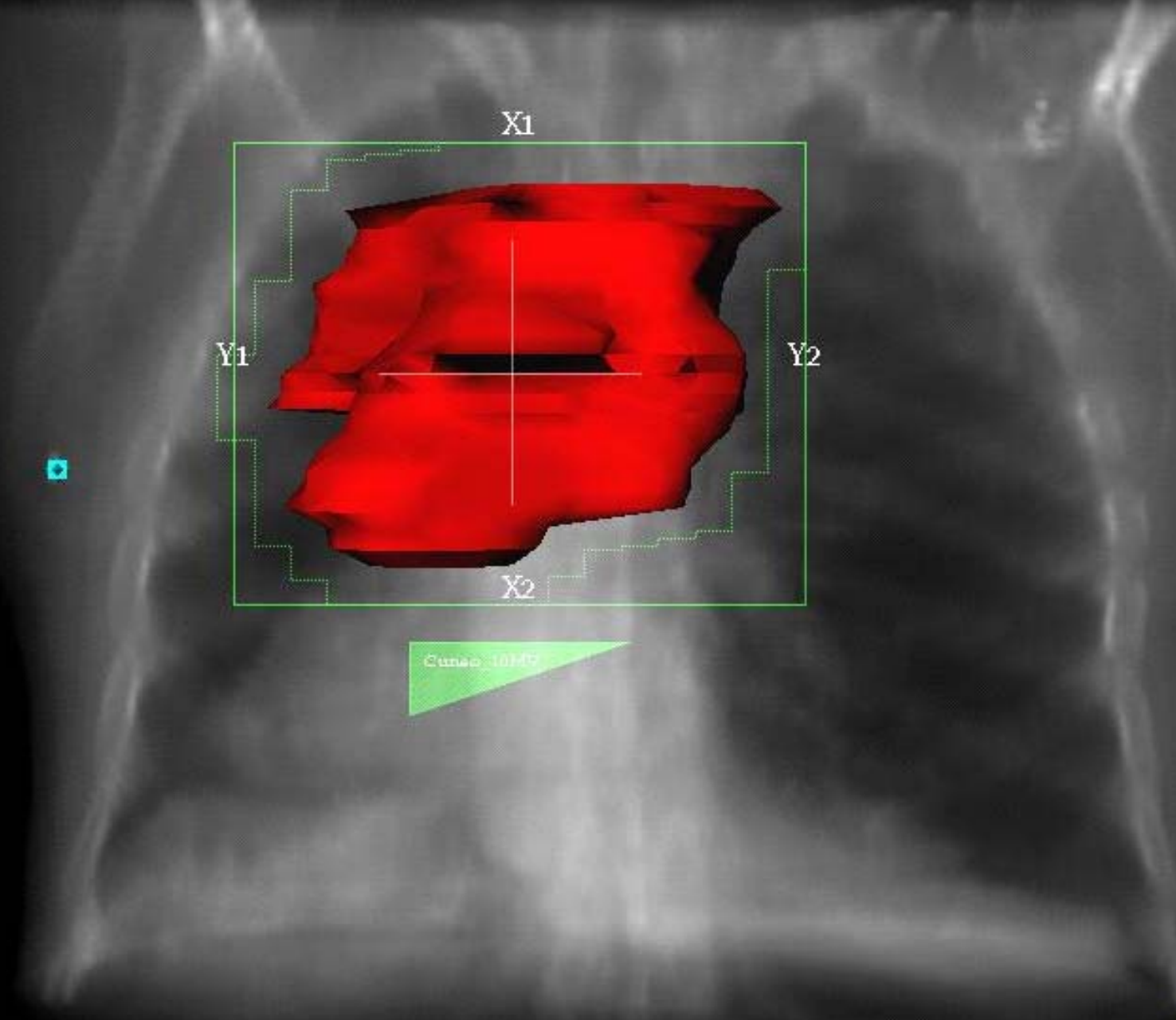
Y2

Y1

X1

POL_AP_0

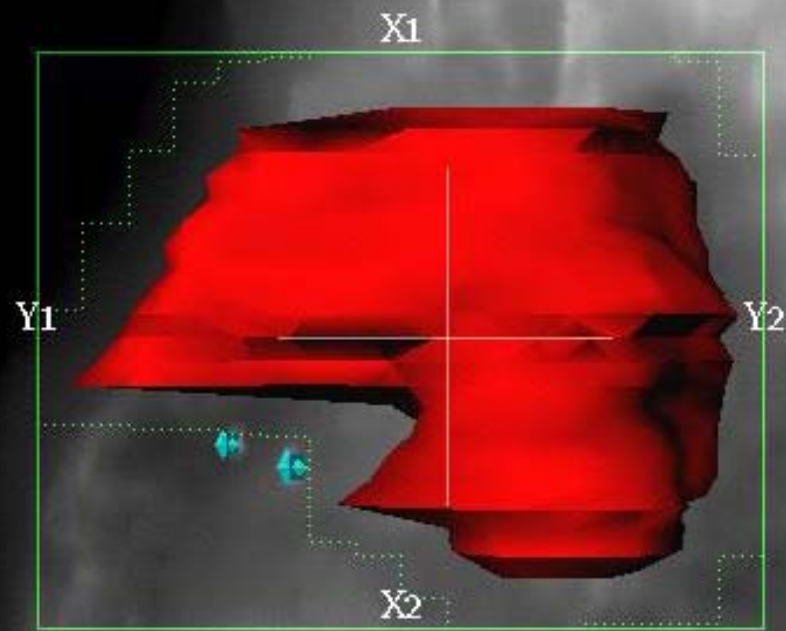
)



Cuneo_10107

POL_PA_180





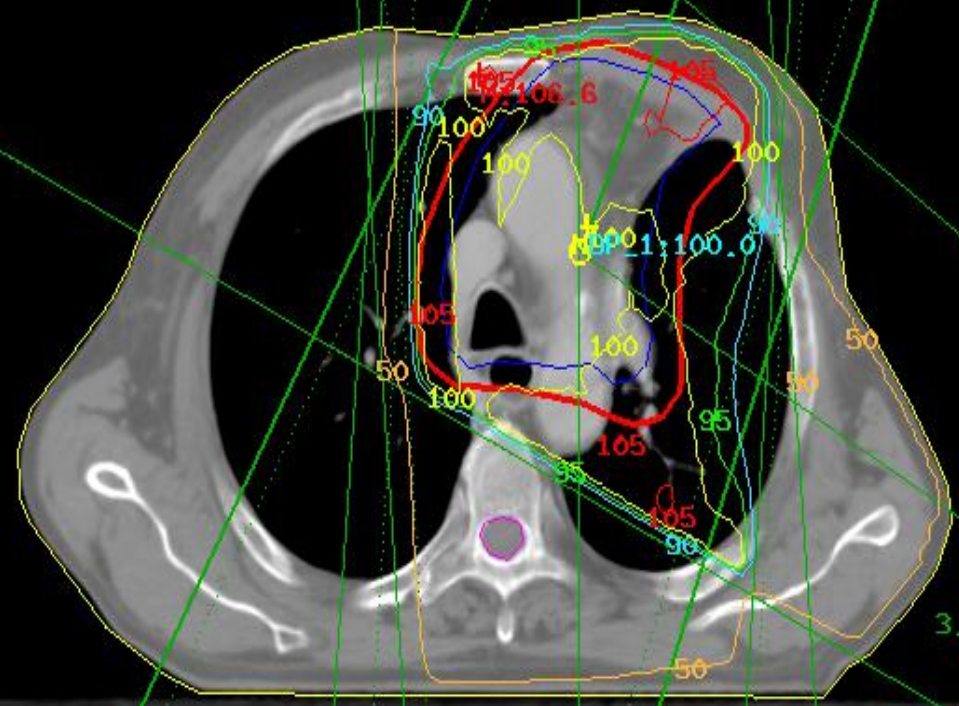
Cunco_10MV

POL_OBL_120

3D Grid
3.9 [mm]
Relative

1.POL_AP_0 (P)
4.POL_OBL_25 (P)

- 50 ———
- 90 ———
- 95 ———
- 100 ———
- 105 ———
- 110 ———
- 115 ———



3.POL_OBL_120 (P)

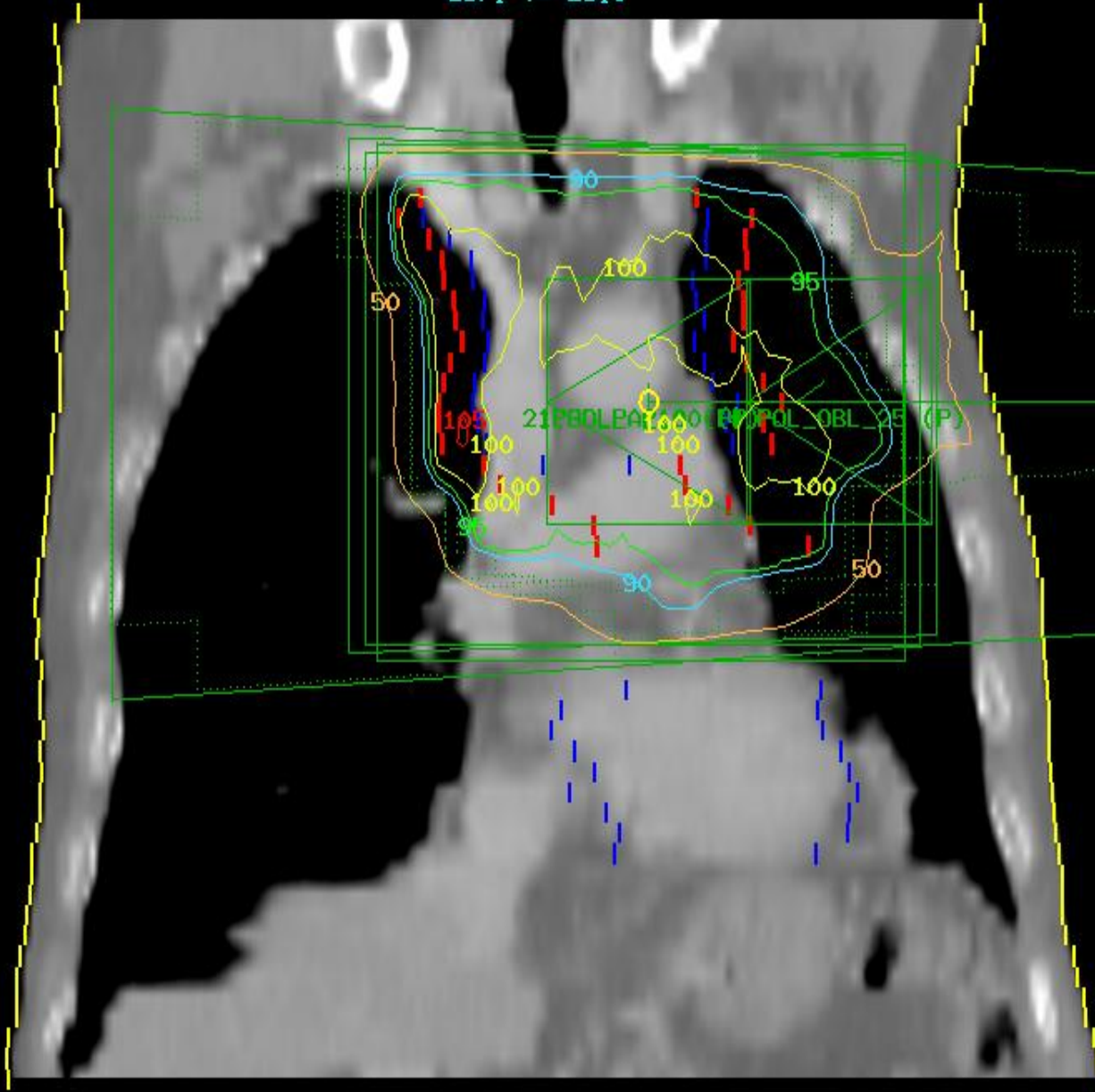
2.POL_PA_180 (P)

#34 Z:-1501.0 [mm]



3D Grid
3.9 [mm]
Relative

Cor. Y=-29.0



- 50 —
- 90 —
- 95 —
- 100 —
- 105 —
- 110 —
- 115 —

3.PBL_OBL_120

A

Y:-29.0 [mm]

3D Grid
3.9 [mm]
Relative

Sag. X=5.0

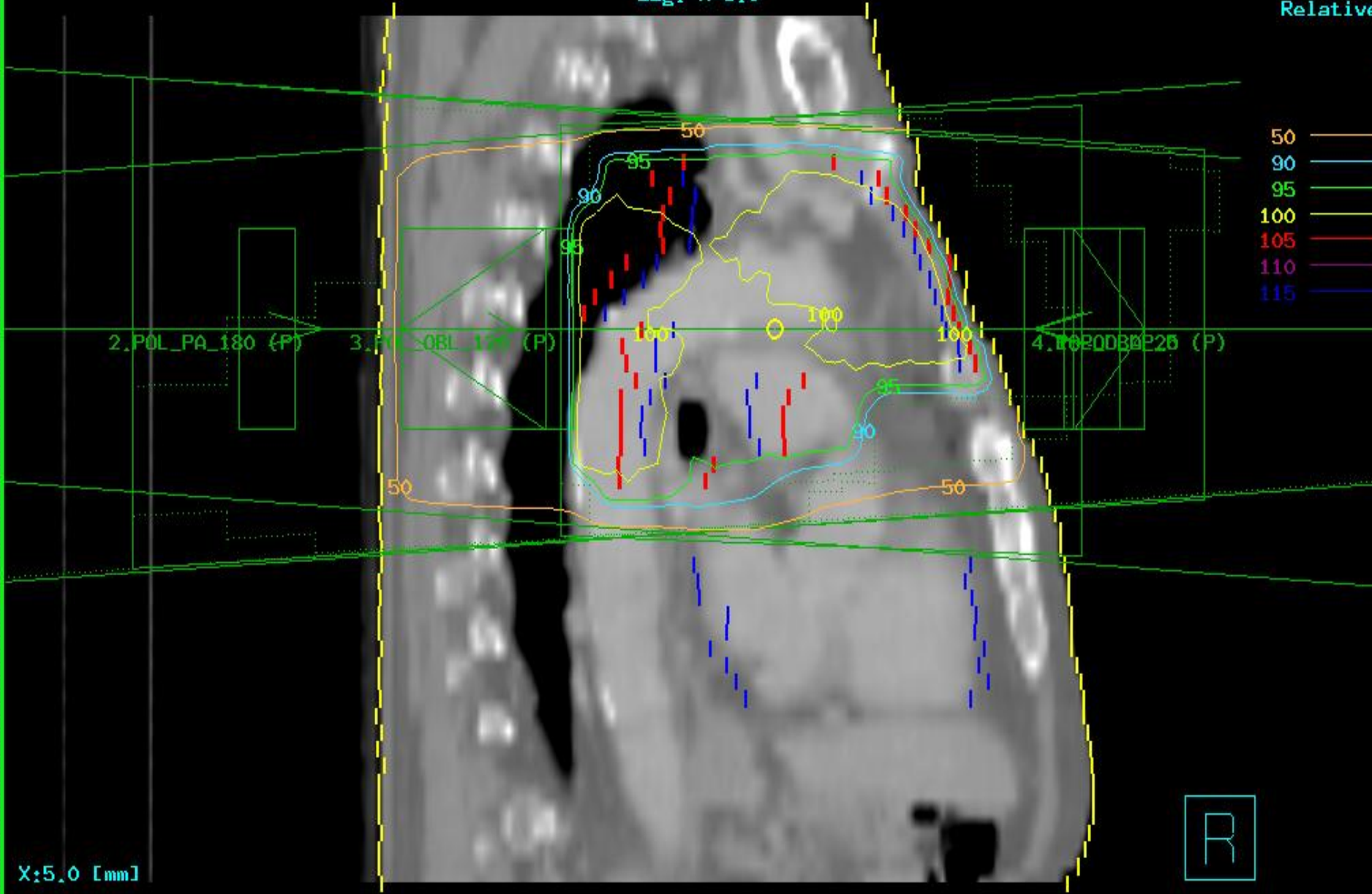
2_POL_PA_180 (P)

3_POL_OBL_120 (P)

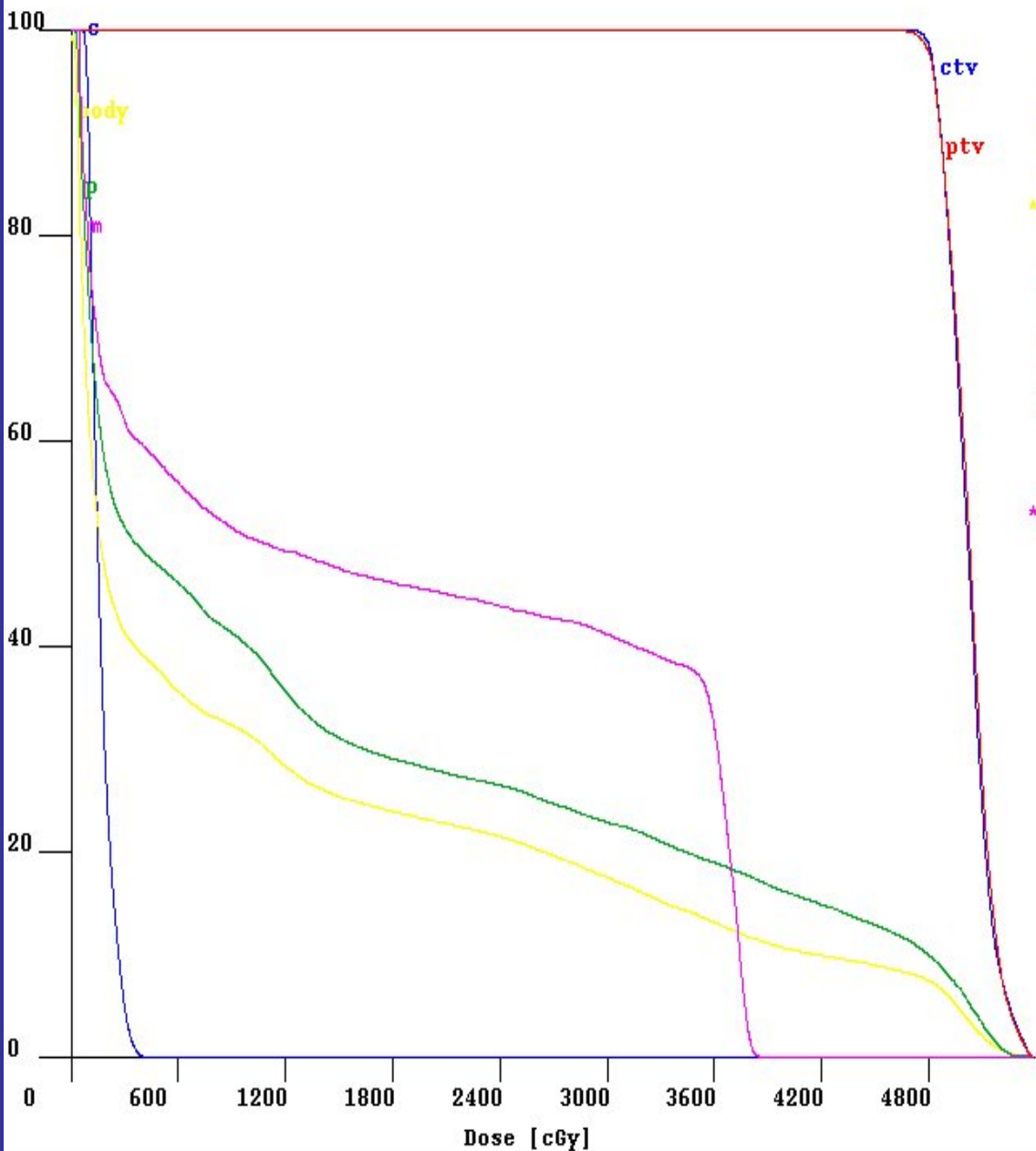
4_POL_PDB025 (P)

- 50 ———
- 90 ———
- 95 ———
- 100 ———
- 105 ———
- 110 ———
- 115 ———

X:5.0 [mm]



Volume [%] # of points: 100000
 Max. Dose [cGy]: 5389



VOI	Vol. (cc)	Area (%)	Dose (cGy)		
			Max	Min	Avg.
c	303.4	3.1	402	65	166
ctv	411.9	93	5378	4566	5020
* body	16337	20	5373	0	1119
ptv	702.4	93	5380	4120	5026
p	4325.9	26	5357	22	1426
m	38.1	33	3851	44	1790

* (could be incomplete)

[Index](#)